



Lissos in Illyria, 2 : A Hellenistic Fill from the Upper Town and Some Considerations on the Importance of Ceramic Debris

Patricia Kögler

Extensive filling layers consisting of ceramic and other debris are a category of material that has been largely neglected in archaeological research and scientific evaluation. In the context of excavations, attention is usually only paid to the most recent pieces within such assemblages, as they may provide a *terminus post quem* for the settlement layers and building structures to be found above. Accordingly, the documentation and publication of filling layers – if it takes place at all – is usually selective and limited to dating material and uncommon finds¹.

However, this disparaging evaluation of ancient rubble does not do justice to its significance and informative value, which extend far beyond the chronological aspect. This is especially true of large and extensive debris, usually the result of equally large and drastic destruction. It can be caused, for example, by armed conflicts or natural disasters, which entail extensive clean-up work in the affected settlement areas as well as rebuilding or even restructuring. The associated deposition of the debris does not always take place immediately after the destruction, but experience has shown that it happens within a certain time frame afterwards, which means that some younger material from the period of the clean-up is also brought into the destruction debris, as well as scattered older material. However, the bulk of the debris material originates from the time of the destruction itself and was produced and used in the years immediately before. As far as the relevant Hellenistic period is concerned, the material from the so-called Sullan destruction in Athens or the Mithridatian one in Delos should be remembered at this point. The temporal spread of such debris is also well illustrated by filling material from the terrace of the sanctuary of Apollon in Knidos, which represents the same decades as the aforementioned material from Athens and Delos: The numerous Knidian wine amphoras are particularly relevant, as their stamps indicate that they are mainly from the so-called duoviri period (107–78 BCE), while the immediately preceding production

1 In this procedure, the usually enormous mass of material certainly also plays a role, the detailed processing of which can hardly be done in the context of an ongoing excavation.

phases are only represented by a few specimens, and amphoras from the earliest groups are not present at all².

These assessments demonstrate very clearly that by studying the contents of debris fillings the material culture of just one generation of dwellers gets documented, namely those who lived immediately before the associated destruction. The analysis of filling material offers a good insight into the daily life of ordinary people over a limited span of time (20–30 years) and can provide important insights into social, cultic and cultural activities, local handicrafts and art, economy and trade as well as other supra-regional interaction. The generally extraordinary mass of finds is actually an advantage here, as it permits to draw conclusions on a broader base and with greater security. The multi-layered knowledge to be gained here, besides historical and chronological aspects, is a sound reason to pay more attention to debris fillings in research. Hence, on the one hand the following study aims to publish additional contextual material, and on the other hand aspires to serve as a case study for pinpointing the possibilities and limits of the interpretation of ceramic debris.

On a terrace in the upper town of Lissos³ archaeologists came across a context of remains comparable to that on the Terrace of Apollon in Knidos, albeit on a smaller scale⁴: The terrace, known as ›Areal M‹, was filled with debris in the southern area during the Hellenistic period to create space for new buildings. On top of the filled-up area, the remains of a small building, probably erected in the middle of the 1st century BCE, were discovered⁵.

In the area of the massive filling, which in some places reaches a thickness of 2m⁶, a representative and extensive pack was recovered in a terrace section⁷. The filling layer, which is here referred to as Group D in continuation with the ceramic groups already published⁸, was artificially divided into five levels due to its massiveness: BF 104, BF 114, BF 120, BF 121, and BF 122, with BF 104 representing the uppermost section of the filling and the other levels follow in numbering sequence downwards. For the sake of simplicity, they are referred to as Levels 1 (BF 104) – 5 (BF 122) and are also listed separately in the catalogue in order to enable precise documentation and permit later traceability.

The dating of the terrace filling in Lissos is much more difficult than in Knidos, since stamped amphora handles are not available. The ceramic material from the filling, mainly composed of roof tiles and wall fragments of transport amphoras, comprises – compared to the finds from the lower town – extremely broken and heavily worn small sherds, due to the hillside location of the site and the corresponding erosion. The surface of the amphora sherds in particular has been defaced, which, in addition to the small size of the rim and foot fragments, makes typological determination and thus chronological classification more difficult. With

2 See KÖGLER 2010, 68–72. 456–508 (Fundkomplex E), for the amphora stamps see esp. nos. E.394–E.520 pp. 494–508.

3 The excavations in Lissos took place in the years 2007–2011 and were carried out by the Albanian Archaeological Instiut, Tirana, and the German Archaeological Institut, Berlin, under the direction of Prof. Gezim Hoxha and Dr. Andreas Oettel.

4 For the following remarks on ›Areal M‹, the topographical situation, the terrace development, dating and functional issues, see the preliminary reports of the excavators: OETTEL 2008, 39; OETTEL 2010, 34; OETTEL 2014, 462; OETTEL 2015, 244. For aerial views and maps of the area see OETTEL 2014, 457 figs. 1. 4; OETTEL 2015, 247 fig. 1; 248 fig. 3. A detailed documentation and evaluation of the excavations in the upper town is in preparation by A. Oettel and G. Hoxha, to be published as a volume within the forthcoming Lissos series of the German Archaeological Institute.

5 See esp. OETTEL 2015, 244; OETTEL 2014, 462.

6 See OETTEL 2014, 462; OETTEL 2015, 244.

7 See Sondage 3 in the above (note 4) mentioned forthcoming publication.

8 KÖGLER 2019.

regard to the amphora types Will A and D, Lamboglia 2 as well as Dressel 1A and 6A, regularly represented in Lissos and partly dependent on each other in terms of developmental history, a clear separation is often hardly possible.

B. Lahi, who works on the amphora finds from Lissos⁹, was able to assign some amphora rims and feet despite the adverse circumstances: some representatives of the types Will A (in level 4), Will D and Dressel 1A (both in levels 2, 3 and 4), as well as a large number of Lamboglia 2 amphoras (in levels 1–4), which are massively omnipresent in Lissos¹⁰. The occurrence of the Lamboglia 2 and Dressel 1A amphoras, first appearing from around 150 to 130 BCE, delivers the earliest possible term for the deposition of Group D in the third quarter of the 2nd century BCE.

The tableware contained in the filling provides better evidence for the dating of the ceramic debris, being particularly rich in the two massive upper levels (1 and 2). First of all, it should be noted that typical late Hellenistic vessel shapes and wares, which develop after 150/125 BCE, are completely absent. Thin-walled or ESA ware and their local imitations, which are present in Group C from the lower town¹¹, are completely missing in the filling material of the terrace. The tableware mainly belongs to the category of black-coated ware and does not yet show any influence of the red sigillata, which developed and rapidly spread in the Mediterranean East shortly after the middle of the 2nd century BCE. The material from Group D should therefore be set earlier than Group C.

Further sound clues for dating can be found primarily in the drinking vessels. Moldmade bowls are represented in a considerable number in the filling (levels 1–4) and generally provide a date for the material in the first half of the 2nd century BCE. The fragment of a long-petal bowl (**D1.64**) and two fragments possibly belonging to so-called shield bowls (**D1.57** and **D1.58**) already represent a more recent phase of moldmade-bowl production in the middle of the 2nd century BCE or in its early second half¹². The same applies to an example that has obviously been produced in Ephesus (**D2.56**).

The range of drinking vessels, however, is dominated by Illyrian kantharoi with grooved body (**D1.4–9**; **D2.3–5**; **D3.3–5**; **D4.3**; **D5.2–3**) and especially by hemispherical and conical drinking bowls / cups, many with painted decoration or rouletting on the inside (**D1.11–18**. **D2.6–12**; **D4.5–7**). The kantharoi and the bowls with rouletting (f. ex. **D4.5**) are common in Illyria and are characteristic of middle Hellenistic assemblages (mid-3rd – mid-2nd century BCE)¹³. A few specimens in the filling (**D1.2**; **D2.3**; **D4.2**) also represent a skyphos type dependent on Italian Gnathia vessels, which was widespread mainly in Northern Illyria from the late 3rd century to the second half of the 2nd century BCE¹⁴.

The dining sets are defined by bowls with incurved rim and plates with a thickened lip, which are abundant in all layers of the filling in large numbers and can hardly be dated more precisely. Notable is the single example of a plate with flat rim in level 1 (**D1.44**), which can be linked to Campanian prototypes with a supposed production start in the middle of the 2nd century BCE¹⁵. The fragment of a plate with upturned rim (**D1.45**) could also be a

9 A detailed publication of the amphorae by B. Lahi is in preparation within the mentioned Lissos series. See also LAHI 2013; LAHI 2015.

10 The uppermost level 1 also contained the foot of an amphora identified as Dressel 6A. This is the only piece of a 1st century BCE amphora type, which most probably was brought in the debris by erosion. – The lowest level 5 only contained a small amount of sherds and no useable amphora material.

11 For Group C see KÖGLER 2019, 88–91. 118–139.

12 For the dating of the long-petal bowl see ROTROFF 2011, and DE LUCA – RADT 1999, 107–109. For the shield bowls see the discussion in DE LUCA – RADT 1999, 100–102; DE LUCA 2021, 100–101.

13 See KÖGLER 2019, 86–87.

14 For the type see recently MIŠE 2015, 34–36. 141–150 nos. 148–166, for the Italian predecessors see pp. 91–109 nos. 48–87.

15 MOREL 1981, 113–115 Form 1441–1443 pl. 17–18.

similarly late piece. However, due to its black coating and the flowing transition from the rim to the lower body, the piece is likely to precede the similar ESA plates¹⁶. Plates with a broad rim in level 1 (D1.42) and level 2 (D2.35–36), on the other hand, are again to be found in the 3rd or early 2nd centuries BCE due to their parallels in Illyria and Italy¹⁷. The range of plates is enriched by some fish plates (D1.46; D2.38–41; D3.17–19), which, however, can hardly be dated more precisely.

Among the closed shapes, some fragments of Illyrian oinochoai / jugs (represented by D2.43) should be mentioned, which are also characteristic of 3rd and 2nd centuries BCE contexts¹⁸.

As a result, the mass of the fine-ware material fits into the time frame from the late 3rd to the middle of the 2nd centuries BCE. In addition, it can be stated that the tableware repertoire of Group D corresponds exactly to that of the extensive Group B from the lower town, which could be assigned to the same time frame¹⁹. The same applies to the range of kitchen ware, which essentially consists of the same types of chytra and lopas in both groups²⁰. Based on these clear similarities, it is reasonable to assume that the debris from the terrace filling of the upper town (Group D) was caused by the same event as the debris filling of Group B.

As already considered for Group B²¹, the debris could with some probability be the result of a destruction of Lissos by the Romans after the battle of Pydna (168 BCE), assumed by A. Oettel based on stratigraphic evidence²².

The filling of the terrace confirms (besides other finds from Areal M) that the upper and lower town were equally affected by this destruction and the subsequent restructuring of the town. Based on the latest ceramics from the debris, this large-scale reconstruction of Lissos should be placed after the middle of the 2nd century, but certainly before 125 BCE.

Furthermore, we can conclude from the material that the city was wealthy before the destruction and had already achieved remarkable prosperity again at the time of rebuilding. On the one hand, the drinking vessels, mostly reflecting the situation of late 3rd and early 2nd centuries BCE Lissos, often show painting or other decorations, and are thus identified as high-quality crockery. As local pottery products, they also demonstrate a certain standard of the local workshops. Beyond that, some vessel types like the Gnathia-type kantharoi and the plates with broad rim attest certain cultural relations between Lissos and its Illyrian neighbours as well as Southern Italy²³, while the numerous moldmade bowls as an invention of Athenian potters reflect the cultural influence of Greece and the East. For the time immediately before the final conquest of Illyria by the Romans, the material from the terrace filling documents a lively Illyrian society with diverse cultural and economic interaction.

16 Compare i. e. examples of Morel's forms 2255, 2256 and 2258, MOREL 1981, 154–155 pls. 40–41.

17 *Illyria*: BUDINA 1972, 337 pl. 26, 1 (upper row, second vessel); CEKA 1985, pl. 42, 13; HIDRI 1986, 103. 108 pl. 5, 6 (Necropolis, grave 26); HOTI 1977–78, 327 pls. 1, 5. – *Italy*: MOREL 1981, 121 nos. 1534d1. 1534h1. 1534h2 pls. 21–22; 104 no. 1313a1 pl. 12; SMALL 1992, 79 no. 674 fig. 29; CARTA – ZEVI 1978, 54 no. 20 fig. 29; REYNOLDS SCOTT 2008, 55. 103–109 no. F16 pl. 10; 144–145. 163–167 nos. H9–H10 pl. 43.

18 See KÖGLER 2019, 87 on no. B.46, with note 58.

19 For Group B see KÖGLER 2019, 86–88. 100–118.

20 Due to their longevity and typological stability, the cooking ware is not suitable for chronological delimitation of the material; rather, the context only actually dates the cooking vessels more precisely. A detailed discussion of the vessel types occurring in Lissos will be presented in a monographic publication that is in preparation.

21 KÖGLER 2019, 86.

22 See OETTEL 2015, 237; OETTEL 2014, 458–460; OETTEL 2010, 34. The history of the city will be discussed in detail in Volume 1 of the Lissos publication series (OETTEL – HOXHA forthcoming).

23 A discussion of the typological relations of each type of vessel will be presented by the author in detail in the forthcoming monograph.

On the other hand, the transport amphoras for wine and other goods are appearing in unprecedented quantities in the horizon of the restructuring and deposition of Group D. They are evidence of an intensive economical exchange between the city and the surrounding Adriatic region soon after the middle of the 2nd century BCE, already in the first decades under Roman dominion. The isolated moldmade bowl from Ephesus alludes to long-distance connections of Lissos, which then became more important in the late Hellenistic period²⁴.

Further information on the history of the upper town is provided by the older material scattered in the terrace fill. It can be seen most clearly in some fragments of Attic-type skyphoi (**D1.1**; **D2.1**; **D3.1**; **D5.1**), which in Lissos represent a leading type of the early Hellenistic horizons, as represented by Group A²⁵. The plate **D5.5** from layer 5, which is unique in Lissos so far, can also be dated between 350–250 BCE due to parallels from Selca and Apollonia²⁶. It is noticeable that older material collects especially in this lowermost level of the filling, which is poor in fragments. Even the kantharos **D5.2** with its spherical body represents an early stage of development of the type, which was only found in a few specimens within the previous finds from Lissos²⁷. Whether this is a coincidence or whether this indicates a slightly older deposit to be expected on the slope, cannot be clarified at the moment²⁸. In any case, the early Hellenistic vessels from Group D, as well as from other sites in Areal M, show that at least this part of the upper town was settled as early as the lower town, namely around 300–250 BCE.

The material from Group D does not provide any information about the character and the nature of use of the terrace. The typologically similarly composed Group B comes from an area of the lower town with clearly profane function. In contrast, a development with mainly public and sacred buildings is assumed for the upper town, among other reasons caused by the remarkable building, which was erected on the filled-up terrace M and which is interpreted by the excavators as a sepulchral or memorial building²⁹. Such a use of the area in the time before the destruction (which is reflected by the debris) is also conceivable, since the composition of the ceramic material from vessels for drinking, food service and cooking does not fundamentally contradict this. Especially in the Hellenistic period, people celebrated (drank, ate and cooked!) extensively in public spaces, especially in sanctuaries, which is illustrated for instance by the findings in the aforementioned sanctuary of Apollon at Knidos. An area suitable for such purposes (open-air symposia), possibly a sanctuary that was in operation at least until the middle of the 2nd century BCE, should then also be sought in the area around Areal M.

But there are also other options: For example, the location of the royal residence in Lissos, which was used by King Genthios in the run-up to the battle of Pydna³⁰, is still completely unclear. The protected location on the hill of the upper town would be ideal to accommodate the king as well as the aristocrats and warriors who surrounded him and celebrated their feasts together. These and other open questions can only be answered by further targeted excavations in the upper town of Lissos.

24 See KÖGLER 2009–2010.

25 See KÖGLER 2019, 83–86. For the Attic-type skyphoi see esp. p. 84 on no. A.1–2.

26 CEKA 1985, 66 pl. 37, 14; LAMBOLEY – VREKAJ 1999, 200. 202 no. 143.

27 Compare the kantharoi from Momišići and Selca, dated before 250 BCE: VELIMIROVIĆ-ŽIŽIĆ 1966, 195. 207 fig. 8; CEKA 1972, 172 pl. 3, 1; CEKA 1985, pl. 38, 13.

28 In the same way, it is noticeable that explicitly more recent material, which can be dated until the middle of the 2nd century BCE at the earliest, is primarily deposited in the upper level.

29 OETTEL 2008, 39; OETTEL 2010, 34–35; OETTEL 2014, 462; OETTEL 2015, 244.

30 The (at least temporary) residence of Genthios in Lissos is attested by literary sources, see OETTEL 2015, 237.

Catalogue³¹

The vessels from the filling layer of the terrace in the upper town come almost exclusively from local production. In the case of **D1.3**, **D1.18**, **D1.32**, **D1.37**, and **D1.42**, this is confirmed by chemical analyses. Unless otherwise stated, their fabric shows the general characteristics already described in KÖGLER 2019, 92. To avoid repetition, the descriptions of clay and coating in the catalogue are limited to the individual characteristics of the vessels, such as colour or inclusions. For individual pieces, the origin from a foreign production centre must be taken into consideration. Due to their small number and the uncertainty of the attribution, these fragments are not listed separately here, but only commented and integrated into the typological sequence.

Due to the quantity of finds, only a representative selection of those vessel types that are contained in bulk in the filling (like Illyrian kantharoi, conical bowls with rouletting, bowls with incurved rim, plates with thickened lip etc.) were documented. A decisive selection criterion was the state of preservation of the fragments, which in many cases could not be drawn due to their too small size. Only the fine and cooking wares in the lowest layer (level 5) of the filling have been fully recorded.

All measurements are given in cm.

Level 1 (BF 104)

Fine ware: drinking vessels

D1.1. Attic-type skyphos (**figs. 1. 2**)

Object no. LI-M-BF0104-007

D. of foot 3.4; pres. H. 2.3.

Complete foot.

Micaceous clay with white lime inclusions, reddish beige (7.5 YR 6/4), surface beige (7.5 YR 6/6).

Vessel coated on the inside, thick, rough, slightly lustrous; black.

D1.2. Gnathia-type skyphos (**fig. 1**)

Object no. LI-M-BF0104-041

Fr. of rim with onset of horizontal handle.

D. of rim 9.5; pres. H. 3.2.

Clay without visible inclusions, beige (10 YR 7/3).

Fr. completely coated; on the outside thick and partially lustrous, black; on the inside thin and translucent, beige to brown.

D1.3. Skyphos (**fig. 1**)

Object no. LI-M-BF0104-004

Sample no.: MD 4468

Fr. of rim with onset of horizontal handle

D. of rim 6.4; pres. H. 2.9.

Slightly micaceous clay with some white lime inclusions, beige (7.5 YR 6/4).

Fr. completely covered with thin and translucent coating, on the inside light beige, reddish (10 YR 7/6), on the outside gray (10 YR 5/1-4/1) with beige spots.

D1.4. Kantharos (**figs. 1. 2**)

Object no. LI-M-BF0104-025

Small fr. of rim.

D. of rim 9; pres. H. 1.8.

Clay without visible inclusions, dark gray (ca. 10 YR 4/1), surface slightly lighter.

No traces of coating.

Decoration: on the outside below the lip fine scratched horizontal line; rim zone with painted decoration: horizontally scratched tendril between a white and an orange painted line, leaves obviously painted, colour lost.

D1.5. Kantharos (**fig. 1**)

Object no. LI-M-BF0104-036

Small fr. of rim.

Clay without visible inclusions, pinkish brown (2.5 YR 6/3).

31 My special thanks go to Lars Heinze who took the photos and to Markus Brückle who prepared the drawings.

Fr. completely coated, worn on the outside, black to dark brown.

D1.6. Kantharos (fig. 1)

Object no. LI-M-BF0104-040

Fr. of rim with onset of horizontal handle.

D. of rim 8; pres. H. 1.6.

Slightly micaceous clay, pinkish brown (5 YR 6/4).

Fr. completely coated, relatively thick, black.

D1.7. Kantharos (fig. 1)

Object no. LI-M-BF0104-032

Fr. of rim.

D. of rim 15; pres. H. 2.

Clay without visible inclusions, pinkish beige (7.5 YR 6/4).

Fr. completely covered with translucent coating, dark brown.

D1.8. Kantharos (fig. 1)

Object no. LI-M-BF0104-033

Fr. of rim.

D. of rim 8.5; pres. H. 3.1.

Slightly micaceous clay with some lime inclusions, beige (7.5 YR 7/6).

Fr. completely coated, partially translucent, reddish brown (7.5 YR 4/4).

D1.9. Kantharos (figs. 1. 2)

Object no. LI-M-BF0104-001

Fr. of rim with two frs. of wall, partially joining.

D. of rim 8.5; pres. H. 6.7.

Slightly micaceous clay, grayish beige (7.5 YR 6/3).

Fr. completely coated, partially lustrous, relatively thick to translucent; on the inside reddish brown (5 YR 5/6-4/6), on the outside dark brown (5 YR 3/3).

D1.10. Kantharos (figs. 1. 2)

Object no. LI-M-BF0104-002

Nearly complete foot with part of the wall.

D. of foot 4.2; pres. H. 3.6.

Micaceous clay with carefully smoothed surface, beige (10 YR 6/3-4), surface light beige (10 YR 8/4).

Coating on inside and outside, foot and lower part of wall left blank; on the inside relatively thick and partially translucent,

reddish brown (5 YR 4/6); on the outside dark brown (10 YR 4/4).

Decoration: two big blotches on the uncoated surface of the lower wall.

D1.11. Hemispherical bowl (figs. 1. 2)

Object no. LI-M-BF0104-022

Fr. of rim and fr. of wall, joining.

D. of rim 14.5; pres. H. 6.2.

Slightly micaceous clay, cinnamon brown (5 YR 6/6).

Frs. completely covered with thick and dull coating, black.

Decoration: on the inside below the lip two horizontal grooves and to the middle of the vessel painted horizontal stripe (upper part white, lower part beige 5 YR 7/6); on the outside light stripe, probably caused by kiln stacking(?), and traces of further painted horizontal stripes.

D1.12. Bowl (fig. 1)

Object no. LI-M-BF0104-031

Fr. of rim.

D. of rim 14; pres. H. 2.2.

Slightly micaceous clay with some lime inclusions, beige (10 YR 7/4).

Fr. completely coated, partially worn, translucent, black.

D1.13. Bowl (fig. 1)

Object no. LI-M-BF0104-029

Fr. of rim.

D. of rim 16; pres. H. 1.8.

Slightly micaceous clay with a few lime inclusions, pinkish brown (5 YR 5/6).

Fr. completely covered with translucent coating, black to dark brown.

D1.14. Bowl (figs. 1. 2)

Object no. LI-M-BF0104-026

Small fr. of rim.

D. of rim 22.5; pres. H. 2.

Clay without visible inclusions, beige (7.5 YR 6/6).

Fr. completely coated, on the inside reddish brown (ca. 7.5 YR 4/4-6), on the outside dark brown to black.

Decoration: on the inside as well as on the outside two horizontal grooves below the lip; on the outside traces of chipped white

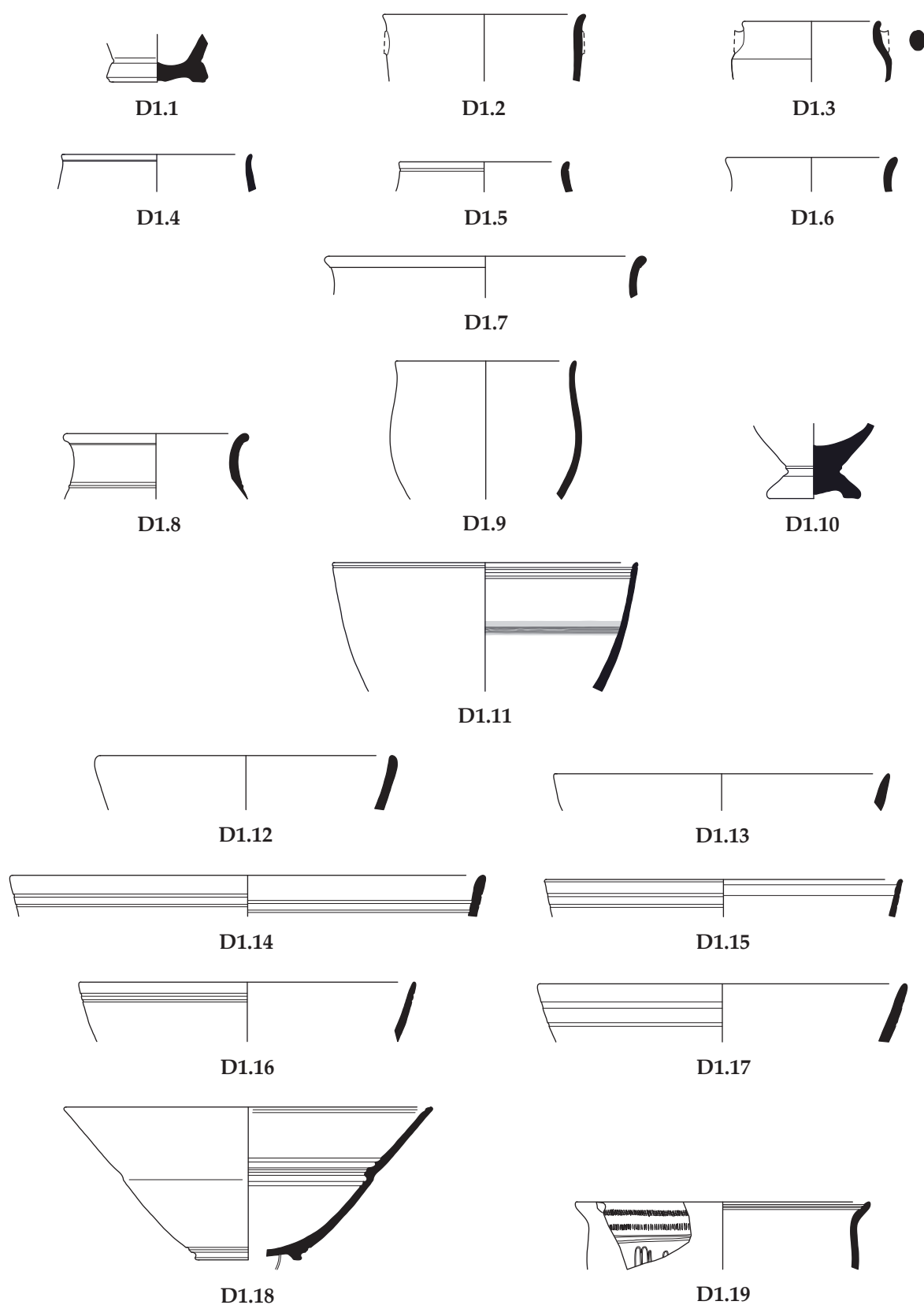


Fig. 1 : Group D level 1 – Fine ware: drinking vessels (scale 1 : 3).



D1.1



D1.4



D1.10



D1.14



D1.19



D1.9



D1.11



D1.18

Fig. 2 : Group D level 1 – Fine ware: drinking vessels (scale 1 : 1).

painting: row of dots directly below the lip and thin horizontal stripe below the grooves.

D1.15. Bowl (fig. 1)

Object no. LI-M-BF0104-027

Small fr. of rim.

D. of rim 17; pres. H. 1.8.

Slightly micaceous clay, pinkish beige (7.5 YR 6/4).

Fr. completely coated, mostly worn, black.

Decoration: on the inside and on the outside two horizontal grooves below the lip.

D1.16. Bowl (fig. 1)

Object no. LI-M-BF0104-028

Two frs. of rim.

D. of rim 16; pres. H. 2.9.

Highly micaceous clay with some lime inclusions, pinkish beige (7.5 YR 6/4).

Both frs. completely coated, mostly worn, orange to brown (7.5 YR 5/8).

Decoration: on the outside below the lip two horizontal grooves.

D1.17. Bowl (fig. 1)

Object no. LI-M-BF0104-038

Fr. of rim.

D. of rim 17.5; pres. H. 2.8.

Highly micaceous clay, pale brown (7.5 YR 6/3).

Fr. completely coated, black to dark brown.

D1.18. Conical bowl (figs. 1. 2)

Object no. LI-M-BF0104-005

Sample no.: MD 4538

Several frs. of rim, wall, and foot, joining, complete shape pres.

D. of rim 17.5; D. of foot 4.3; H. 7.3.

Hard micaceous clay with few lime inclusions, gray (10 YR 7/1).

Vessel completely covered with slightly lustrous coating, black, partially yellowish brown (7.5 YR 5/4-6) and brown (7.5 YR 5/7).

Decoration: on the inside horizontal ridge.

Remark: some of the frs. appeared in level 2 of the fill (BF 114).

D1.19. Bowl with outturned rim (figs. 1. 2)

Object no. LI-M-BF0104-008

Fr. of rim

D. of rim 14; pres. H. 3.2.

Slightly micaceous clay with few lime inclusions, gray (7.5 YR 5/1).

Fr. completely coated, gray, inside of rim partially brown (ca. 7.5 YR 4/3).

Decoration: on the outside of the rim two horizontal rows of fine rouletting, vertical grooves on the body.

Fine ware: vessels for food service and closed shapes

D1.20. Bowl with incurved rim (fig. 3)

Object no. LI-M-BF0104-039

Fr. of rim.

D. of rim 17; pres. H. 3.4.

Fine clay with a little mica and smoothed surface, pinkish beige (7.5 YR 6/4), on the surface a little brighter.

Fr. completely coated, mostly worn, black.

D1.21. Bowl with incurved rim (fig. 3)

Object no. LI-M-BF0104-044

Fr. of rim.

D. of rim 13; pres. H. 2.8.

Slightly micaceous clay, pinkish brown (2.5 YR 7/4).

Fr. completely coated, on the outside black, on the inside dark brown (2.5 YR 4/4).

D1.22. Bowl with incurved rim (fig. 3)

Object no. LI-M-BF0104-045

Fr. of rim.

D. of rim 13.5; pres. H. 3.

Slightly micaceous clay, pinkish beige (7.5 YR 7/4).

Fr. completely coated, coating partially lustrous, black to dark brown (7.5 YR 3/4).

D1.23. Bowl with incurved rim (fig. 3)

Object no. LI-M-BF0104-042

Fr. of rim.

D. of rim 16.5; pres. H. 3.3.

Slightly micaceous clay with a few lime inclusions, pinkish beige (7.5 YR 6/4).

Inside and upper part of the outside coated, black to dark brown.

D1.24. Bowl with incurved rim (fig. 3)

Object no. LI-M-BF0104-035

Fr. of rim.

D. of rim 19; pres. H. 3.7.

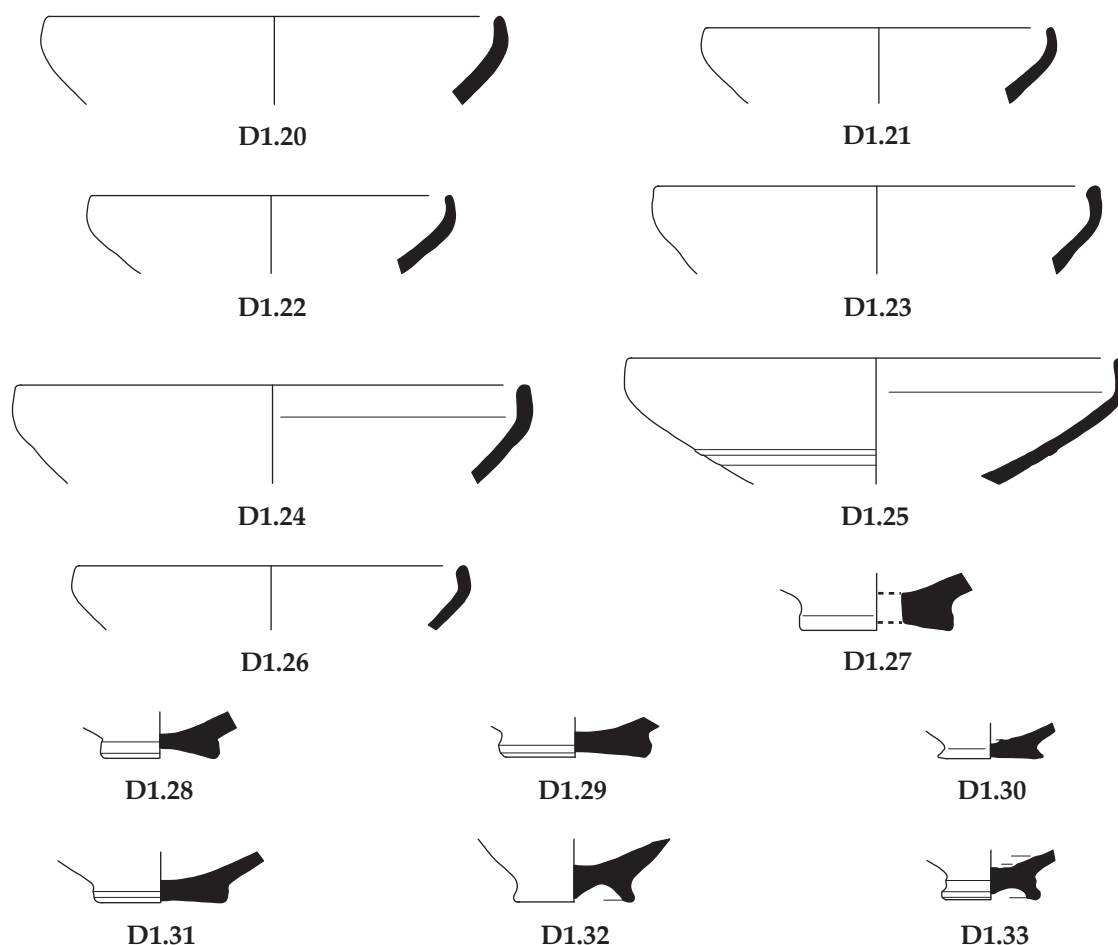


Fig. 3 : Group D level 1 – Fine ware: bowls (scale 1 : 3).

Highly micaceous clay, pinkish beige (5 YR 6/6).

Fr. completely coated, reddish brown (2.5 YR 5/8).

D1.25. Bowl with incurved rim (fig. 3)

Object no. LI-M-BF0104-068

Fr. of rim.

Fine clay with smoothed surface and some lime inclusions, with small bubbles and lumps of clay, pinkish brown (5 YR 5/6). Coating on the inside and on the upper part of the outside, translucent, brown (ca. 5 YR 4/4).

D1.26. Bowl with incurved rim (fig. 3)

Object no. LI-M-BF0104-046

Fr. of rim.

D. of rim 14.5; pres. H. 2.5.

Slightly micaceous clay with few lime inclusions, pinkish brown (5 YR 6/4).

Fr. completely coated, coating translucent, black to dark brown.

D1.27. Small bowl (figs. 3, 5)

Object no. LI-M-BF0104-024

Complete disc foot.

D. of foot 5.4; pres. H. 2.2.

Highly micaceous clay with some lime inclusions, beige (7.5 YR 6/4), surface a little lighter and yellowish.

Remark: in the centre of the foot big round hole (D. ca. 1 cm), carefully cut out.

D1.28. Small bowl (fig. 3)

Object no. LI-M-BF0104-047

Complete disc foot.

D. of foot 4; pres. H. 1.7.

Highly micaceous clay with lime inclusions and carefully smoothed surface, pinkish beige (7.5 YR 7/4).

Coating on the inside, mostly worn, cinnamon brown (7.5 YR 5/6).

D1.29. Small bowl (figs. 3. 5)

Object no. LI-M-BF0104-048

Complete disc foot.

D. of foot 5.2; pres. H. 1.5.

Fine clay with carefully smoothed surface, a few lime inclusions and mica, pinkish brown (5 YR 6/4), slightly more light on the surface. Few traces of coating on the inside, dark brown.

D1.30. Small bowl (figs. 3. 5)

Object no. LI-M-BF0104-049

Complete disc foot.

D of foot 4; pres. H. 1.3.

Highly micaceous clay, pinkish brown (7.5 YR 7/4), surface pinkish beige (7.5 YR 8/4).

Coating on the inside, mostly worn off, black.

Remark: on the inside in the centre of the disk small hollow.

D1.31. Small bowl (fig. 3)

Object no. LI-M-BF0104-065

Complete disc foot.

D. of foot 4.4; pres. H. 1.9.

Slightly micaceous clay with lime inclusions and smoothed surface, pinkish brown (5 YR 6/6, surface 5 YR 7/4).

Coating completely worn.

D1.32. Small bowl (figs. 3. 5)

Object no. LI-M-BF0104-037

Sample no.: MD 4537

Half of the foot.

D. of foot 4.5; pres. H. 2.4.

Clay without visible inclusions, brown (7.5 YR 6/3).

Coating on the inside, cracked and partially flaking off, slightly lustrous, dark brown (7.5 YR 3/2).

D1.33. Small bowl (fig. 3)

Object no. LI-M-BF0104-003

Half of the foot.

D. of foot 3.4; pres. H. 1.4.

Slightly micaceous clay, lime inclusions, grayish beige (7.5 YR 6/4), on the surface a little lighter.

Coating on the inside, slightly reflecting, black.

D1.34. Plate (figs. 4. 5)

Object no. LI-M-BF0104-015

Fr. of rim

D. of rim 15; pres. H. 2.5.

Fine clay with few quartz(?) inclusions, pinkish brown (7.5 YR 6/4), surface light beige (7.5 YR 7/4).

Coating on inside and below the lip, run down drops on the wall, black with brown spots (7.5 YR 5/6).

D1.35. Plate (fig. 4)

Object no. LI-M-BF0104-011

Fr. of rim.

D. of rim 11; pres. H. 2.2.

Slightly micaceous clay with large lime inclusions, beige (10 YR 6/6), surface light beige (10 YR 7/4).

Coating on the inside only, reddish brown (7.5 YR 5/6).

D1.36. Plate (fig. 4)

Object no. LI-M-BF0104-012

Two frs. of rim.

D. of rim 20; pres. H. 3.

Slightly micaceous clay, cinnamon brown (7.5 YR 6/6), on the surface light beige (7.5 YR 6/6) and pinkish beige (5 YR 7/4) in stripes.

Coating on the inside only, black to dark brown.

D1.37. Plate (figs. 4. 5)

Object no. LI-M-BF0104-021

Sample no: MD 4539

Two frs. of rim, joining.

D. of rim 17; pres. H. 2.2.

Clay without visible inclusions, very carefully smoothed surface, pinkish brown (5 YR 6/4), same colour on the surface.

Coating on the inside and on small upper part of the outside, partially slightly lustrous, black.

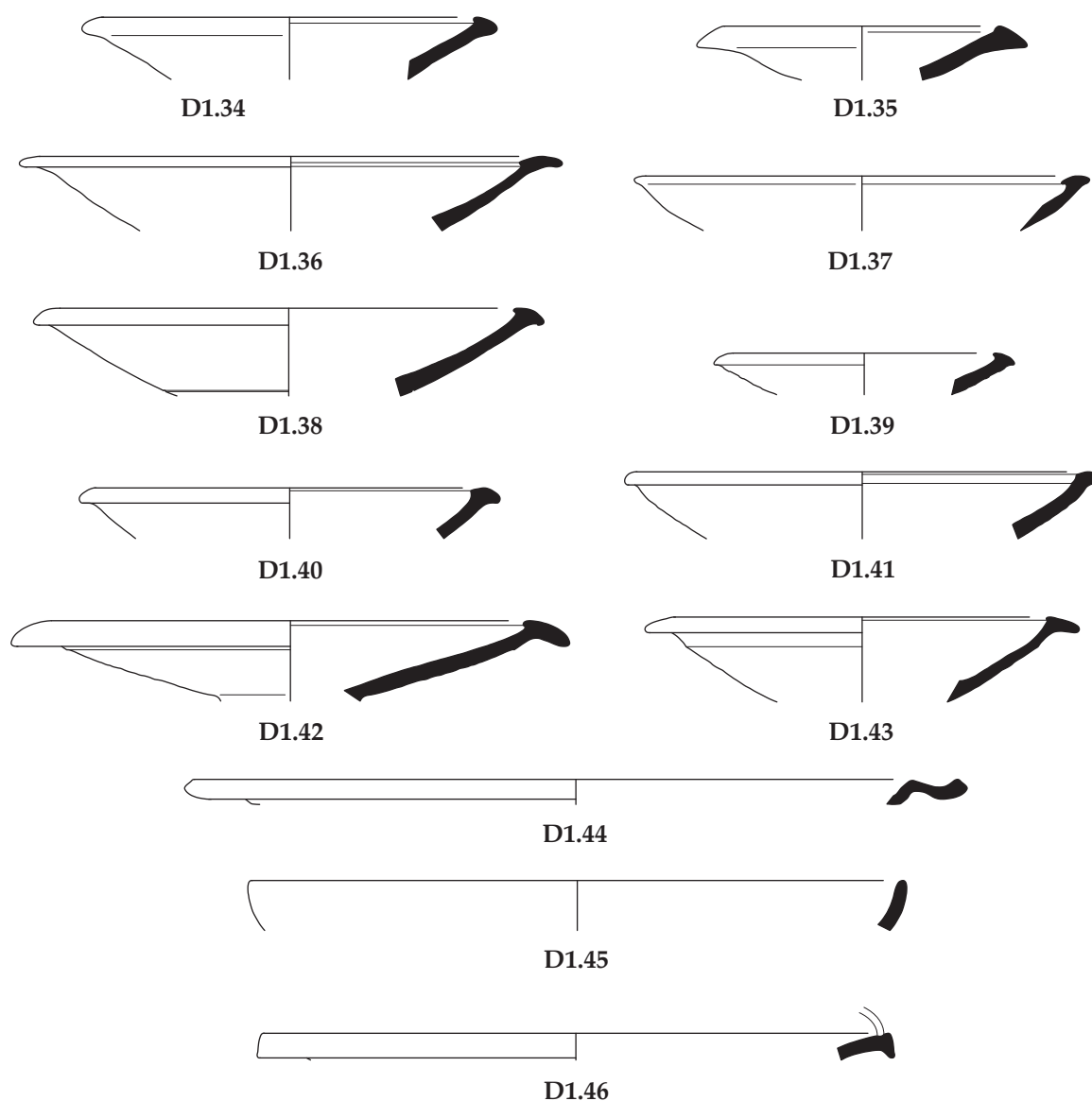


Fig. 4 : Group D level 1 – Fine ware: plates and fish plates (scale 1 : 3).

D1.38. Plate (fig. 4)

Object no. LI-M-BF0104-017

Fr. of rim.

D. of rim 18.5; pres. H. 3.5.

Fine clay with carefully smoothed surface, slightly micaceous, a few quartz(?) particles, pinkish brown (7.5 YR 6/4), on the surface light beige (10 YR 8/4) and pinkish beige (7.5 YR 8/4), streaky.

Coating on the inside and below the lip on the outside, dark brown (7.5 YR 8/3).

D. of rim 10.5; pres. H. 1.7.

Clay with a few lime inclusions, pinkish brown (5 YR 6/4).

Fr. completely coated, black to dark brown.

D1.40. Plate (fig. 4)

Object no. LI-M-BF0104-013

Fr. of rim.

D. of rim 15.5; pres. H. 2.1.

Fine clay with carefully smoothed surface, no visible inclusions, pinkish brown (5 YR 7/4), on the surface light beige (7.5 YR 8/4).

Coating on the inside only, dark brown (7.5 YR 4/4).

D1.39. Plate (fig. 4)

Object no. LI-M-BF0104-020

Fr. of rim.





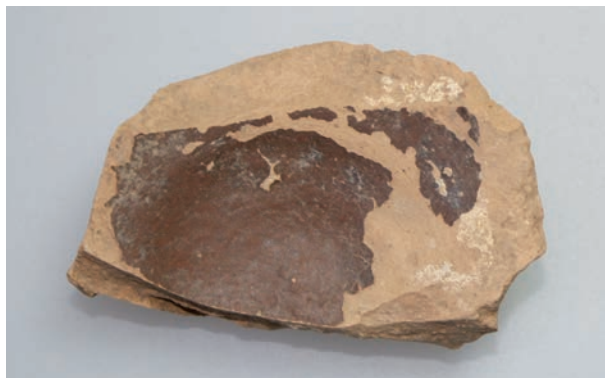
D1.27



D1.29



D1.30



D1.32



D1.34



D1.42



D1.37

Fig. 5 : Group D level 1 – Fine ware: bowls and plates (scale 1 : 1, except D1.42).



Fig. 6 : Group D level 1 – Fine ware: closed shapes, kernos, moldmade bowl (scale 1 : 3).

D1.41. Plate (fig. 4)

Object no. LI-M-BF0104-016

Fr. of rim.

D. of rim 18; pres. H. 2.7.

Clay with a few lime inclusions, pinkish brown (7.5 YR 6/4), on the surface a little brighter.

Coating on the inside and below the rim on the outside, slightly lustrous, flaked off on some places, black to dark brown.

D1.42. Plate (figs. 4. 5)

Object no. LI-M-BF0104-018

Sample no.: MD 4540

Several frs. of rim and wall.

D of rim 19; pres. H. 3.2.

Highly micaceous clay with a few lime inclusions, grayish brown (7.5 YR 6/1).

Fr. completely coated, slightly lustrous, on the outside black, on the inside brown (7.5 YR 5/4) and greenish gray (2.5 Y 6/2-3).

D1.43. Plate (fig. 4)

Object no. LI-M-BF0104-014

Fr. of rim.

D. of rim 15; pres. H. 3.4.

Fine clay with smoothed surface, no visible inclusions, pinkish beige (7.5 YR 7/4), on the surface light beige (ca. 7.5 YR 8/4).

Coating on inside only, dark brown (7.5 YR 4/4 und $\frac{3}{4}$).

D1.44. Plate (fig. 4)

Object no. LI-M-BF0104-034

Fr. of rim.

D. of rim ca. 29.5; pres. H. 1.8.

Highly micaceous clay, beige (7.5 YR 6/6).

Fr. completely coated, only few traces preserved, reddish brown (5 YR 5/8).

D1.45. Plate with upturned rim or large bowl(?) (fig. 4)

Object no. LI-M-BF0104-009

Small fr. of rim.

D. of rim 26; pres. H. 2.

Highly micaceous clay with a few lime inclusions, gray (2. 7/5 PB).

Fr. completely coated, black to dark brown.

D1.46. Fish plate (fig. 4)

Object no. LI-M-BF0104-023

Fr. of rim.

D. of rim 25; pres. H. 1.1.

Fine clay with carefully smoothed surface, micaceous, pinkish brown (5 YR 6/4), on the surface a little brighter.

Coating on the inside and on the outer edge of the lip, black.

D1.47. Pyxis (fig. 6)

Object no. LI-M-BF0104-043

Fr. of rim.

D. of rim 6.2; pres. H. 1.9.

Fine, slightly micaceous clay with a few lime inclusions, beige (7.5 YR 6/6).

Coating on the lip only, a few small traces of coating on the outside, reddish brown (2.5 YR 4/8).

D1.48. Jug (fig. 6)

Object no. LI-M-BF0104-010

Fr. of rim.

D. of rim 14; pres. H. 1.3.

Fine, slightly micaceous clay, gray (10 YR 6/1).

Fr. completely coated, black to dark brown.

D1.49. Kernos (fig. 6)

Object no. LI-M-BF0104-019

Nearly half the vessel, complete outline except centre of foot.
D. of rim 5,4; pres. H. 3.5.
Highly micaceous clay with some lime inclusions, beige (ca. 10 YR 6/6), on the surface a little brighter.
No traces of coating.
Decoration: thin painted stripe on the outside of the rim, beige to brown (5 YR 5/8), with a slight distance below few traces of another painted stripe in the same colour.

Moldmade fine ware

D1.50. Application-decorated (fig. 7)

Object no. LI-M-BF0104-069
Nearly half of the application.
Pres. H. 3.2; Width 3.1; Depth 2.1.
Very hard and fine clay, breaks cracking and smooth, few lime inclusions, pinkish beige (7.5 YR 6/4, on the surface 7.5 YR 7/4).
Coating on the outside, thin, dull, slightly rough, black to dark brown.
Motif: head of a Silenus / theatre mask of the slave, pres. from chin to forehead.
Probably not locally produced.

D1.51. Moldmade bowl (fig. 6)

Object no. LI-M-BF0104-030
Small fr. of the rim.
D. of rim 4.5; pres. H. 1.9.
Slightly micaceous clay, pinkish beige (5 YR 5/6).
Fr. completely coated, on the outside reddish brown (5 YR 4/6), on the inside dark brown to black.

D1.52. Moldmade bowl (fig. 7)

Object no. LI-M-BF0104-084
Two frs. of the rim and one fr. of the wall, not joining.
D. of rim 12; pres. H. 3.9.
Slightly micaceous clay with a few lime inclusions, brown (5 YR 5/6).
Fr. completely coated, patchy, partially thin and translucent, dull to slightly lustrous; black, dark reddish brown (2.5 YR 4/6), beige (2.5 YR 5/8).
Decoration: below the rim three ornamental stripes: meander, astragalus, and egg-and-dart, all separated by lines.

D1.53. Moldmade bowl (fig. 7)

Object no. LI-M-BF0104-081
Fr. of rim.
D. of rim 12; pres. H. 3.4.
Fine, hard and slightly micaceous clay with a few lime inclusions, pinkish brown (5 YR 6/6).
Fr. completely coated, thin, slightly lustrous, on the outside dark brown to black, on the inside black to dark beige (2.5 YR 4/6).
Decoration: below the rim and separated by lines: small ornamental stripe with unidentifiable motif, egg-and-dart, small part of a higher zone with figural or floral decoration, unidentifiable.

D1.54. Moldmade bowl (fig. 7)

Object no. LI-M-BF0104-085
Fr. of rim.
D. of rim not measurable; pres. H. 2.2; dimensions of the fr. 3.3 × 2.4.
Fine, slightly micaceous clay, brown.
Fr. completely coated, on the outside patchy and translucent, dull, on the inside black, on the outside dark brown.
Decoration: ornamental band with egg-and-dart below a line.

D1.55. Moldmade bowl (fig. 7)

Object no. LI-M-BF0104-082
Fr. of bottom.
D. of bottom 3.1; pres. H. 0.9.
Slightly micaceous clay, brown (5 YR 5/6).
Fr. completely coated, a little lustrous, reddish brown (10 R 5/6-8).
Decoration: rosette made of lancet leaves with central button and surrounded by a line; straight line in a little distance above the rosette.

D1.56. Moldmade bowl (fig. 7)

Object no. LI-M-BF0104-075
Fr. of wall.
Dimensions of the fr. 2.7 × 2.5.
Slightly micaceous clay, beige (7.5 YR 6/6).
Fr. completely coated, thin, dull, dark beige (2.5 YR 5/8).
Decoration: below the rim narrow frieze with vine tendril between two lines, below the tendril remains of a leaf or a rosette(?).



D1.50



D1.52



D1.53



D1.54



D1.55



D1.56



D1.57



D1.58



D1.59



D1.60



D1.61



D1.62



D1.63



D1.64



D1.65



D1.66

Fig. 7 : Group D level 1 – Fine ware: applied decoration and moldmade bowls (scale 1 : 1).

D1.57. Moldmade bowl (fig. 7)

Object no. LI-M-BF0104-074

Fr. of wall.

Dimensions of the fr. 3×2.2 .

Fine clay without visible inclusions, beige (10 YR 7-6/4).

Fr. completely coated, thin, dull, black.

Decoration: two rows of dots separated by a line. Part of a shield bowl?

D1.58. Moldmade bowl (fig. 7)

Object no. LI-M-BF0104-078

Fr. of wall, 2.1×1.6 .

Fine clay without visible inclusions, pinkish beige (5 YR 6/4).

Fr. completely coated, patchy, translucent, dull, dark brown.

Decoration: two ornamental zones separated by a line, in the upper zone egg-and-dart motif, in the lower zone row of stacked semicircles (shield bowl?).

D1.59. Moldmade bowl (fig. 7)

Object no. LI-M-BF0104-077

Fr. of wall.

Fine clay with a little mica, reddish brown (2.5 YR 5/8).

Fr. completely coated, dull to slightly lustrous, on the outside rim black, lower part of the outside and on the inside reddish brown (2.5 YR 4/8).

Decoration: motif in the upper part of the fr. unidentifiable; in the middle of the fr. ornamental stripe with egg-and-dart between lines; in the lower part remains of floral decoration, probably bundle of three lancet leaves (laurel?) with berries made of dots.

Compare **D1.59**, maybe from the same bowl.

D1.60. Moldmade bowl (fig. 7)

Object no. LI-M-BF0104-076

Fr. of wall, 2.5×2.3 .

Slightly micaceous clay, reddish brown (2.5 YR 5/8).

Fr. completely coated, reddish brown (10 R 5/8).

Decoration: below a line bundle of three lancet leaves (laurel?) with berries made of dots.

Compare **D1.58**, maybe from the same bowl.

D1.61. Moldmade bowl (fig. 7)

Object no. LI-M-BF0104-070

Fr. of wall, 2.8×1.8 .

Slightly micaceous clay with lime inclusions, beige (7.5 YR 6/6).

Fr. completely coated, reddish brown (2.5 YR 5/4).

Decoration: part of a calyx, central section of a large acanthus leaf.

Compare **D1.62**, maybe from the same bowl.

D1.62. Moldmade bowl (fig. 7)

Object no. LI-M-BF0104-072

Fr. of wall, 2.8×2.6 .

Slightly micaceous clay, pinkish beige (5 YR 6/6).

Fr. completely coated, reddish brown (10 R 5/6).

Decoration: part of a calyx, large part of a diamond-shaped lotus leaf, in the left corner of the fr. part of an acanthus leaf.

Compare **D1.61**, maybe from the same bowl.

D1.63. Moldmade bowl (fig. 7)

Object no. LI-M-BF0104-073

Fr. of wall, 2.5×2.8 .

Slightly micaceous clay, beige (7.5 YR 6/6).

Fr. completely coated, reddish brown.

Decoration: part of a calyx, small rosette-like flower on a tall, curved stem that branches out several times at the base, in the left lower corner of the fr. part of a large acanthus leaf.

D1.64. Moldmade bowl (fig. 7)

Object no. LI-M-BF0104-079

Fr. of wall, 3.1×2.4 .

Weak and slightly micaceous clay, brown (5 YR 5/6).

Fr. completely coated, on the inside reddish brown (2.5 YR 4/8), on the outside dark reddish brown (2.5 YR 4/3).

Decoration: long-petal bowl, below a line parts of three petals with raised centre pres., upper part of the fr. shows no traces of decoration.

D1.65. Moldmade bowl (fig. 7)

Object no. LI-M-BF0104-083

Two frs. of wall, not joining, 3.1×1.3 and 2×1.2 .

Slightly micaceous clay, brown (2.5 YR 5/6).

Both frs. completely coated, reddish brown (2.5 YR 4/8).

Decoraton: imbricate leaf decoration, pres. part of at least three staggered rows of small leaves with raised outline and leaf veins.

For the imbricate leaves compare **D2.51**.

From the same bowl?

D1.66. Moldmade bowl (**fig. 7**)

Object no. LI-M-BF0104-080

Fr. of wall, 2.1 × 1.9.

Slightly micaceous clay, brown (5 YR 6/6).

Fr. completely coated, relatively thick coating, dull, black.

Decoration: row of small rosettes between horizontal grooves, in the lower part of the fr. tips of small leaves (imbricate leaf decoration?).

Maybe not produced in a local workshop.

Also inventoried: small wall frs. of two more moldmade bowls with barely visible relief (Object no. LI-M-BF0104-071, -086).

Plain and coarse wares

D1.67. Jar (**fig. 8**)

Object no. LI-M-BF0104-061

Fr. of bottom.

D. of foot 3.5; pres. H. 3.5.

Relatively hard clay, surface roughened by numerous inclusions, highly micaceous, lime and quartz inclusions, beige (7.5 YR 6/8), surface a little more yellowish.

D1.68. Jar (**fig. 8**)

Object no. LI-M-BF0104-066

Fr. of bottom.

D. of foot 7.8; pres. H. 2.4.

Soft and easily breakable clay, on the surface numerous deep grooves caused by inclusions, highly micaceous, a few lime particles, pinkish beige (7.5 YR 7/6), surface light beige (7.5 YR 8/4).

D1.69. Jar (**fig. 8**)

Object no. LI-M-BF0104-063

Ca. three quarters of the bottom.

D. of foot 13; pres. H. 1.8.

Fine and hard clay with dense texture, surface carefully smoothed, highly

micaceous, beige (10 YR 7/4), surface light beige (between 10 YR 7/4 and 8/4).

D1.70. Chytra (**figs. 8. 9**)

Object no. LI-M-BF0104-050

Fr. of rim.

D. of rim 24; pres. H. 3.3.

Fine, porous, and soft clay, surface carefully smoothed, micaceous, lime and quartz inclusions, orange brown (2.5 YR 5/8, surface 5 YR 6/8).

D1.71. Chytra (**figs. 8. 9**)

Object no. LI-M-BF0104-056

Fr. of rim with remains of a handle.

D. of rim 13.5; pres. H. 2.2.

Fine, soft clay with dense texture, highly micaceous, some lime and lots of quartz inclusions, pinkish brown (2.5 YR 5/8), surface a little brighter and yellowish (5 YR 6/6).

D1.72. Chytra (**fig. 8**)

Object no. LI-M-BF0104-052

Fr. of rim.

D. of rim 15; pres. H. 1.9.

Fine clay with dense texture and slightly porous surface, highly micaceous, lime and lots of quartz inclusions, cinnamon brown (2.5 YR 5/6), surface a little paler (2.5 YR 5/4).

D1.73. Chytra (**fig. 8**)

Object no. LI-M-BF0104-053

Fr. of rim.

D. of rim 10; pres. H. 3.

Fine, soft clay with dense to slightly porous texture, rough and porous surface, highly micaceous, dark brown (2.5 YR 4/2), surface on the outside and lip grayish brown (5 YR 4/2) and on the inside reddish (ca. 5 YR 5/6).

D1.74. Chytra (**fig. 8**)

Object no. LI-M-BF0104-054

Fr. of rim.

D. of rim 17.5; pres. H. 2.1.

Fabric as usual, cinnamon brown (5 YR 5/8) at the rim, black to the outside, surface of the lip and the outside anthracite, surface of the inside beige (7.5 YR 7/6).

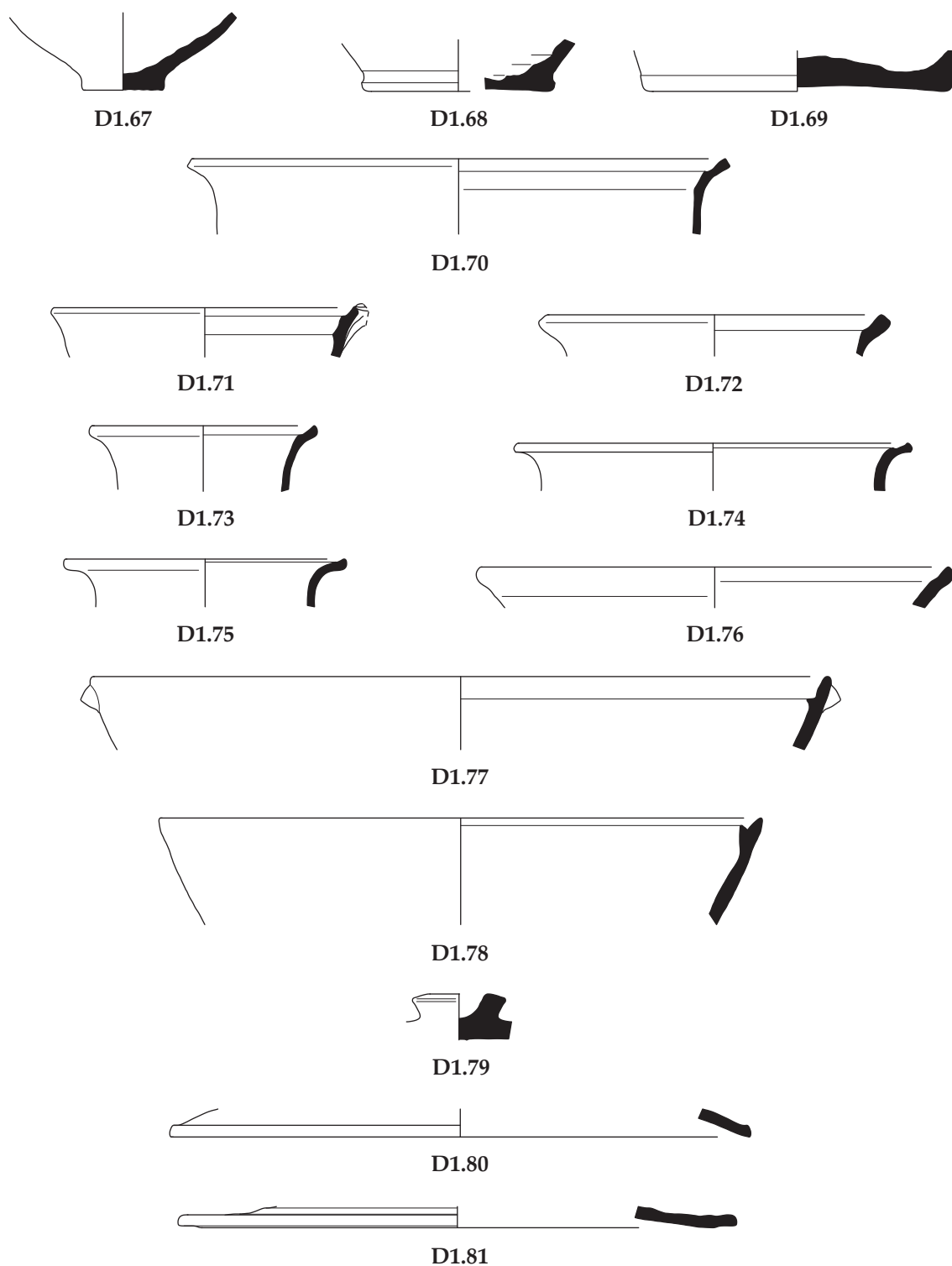


Fig. 8 : Group D level 1 – Plain and coarse wares (scale 1 : 3).

D1.75. Chytra (fig. 8)

Object no. LI-M-BF0104-058

Fr. of rim.

D. of rim 12.5; pres. H. 2.2.

Fine, soft clay with dense texture, lots of mica and quartz inclusions, a few lime inclusions, cinnamon brown (7.5 YR 5/8) and at the lip black, surface of lip and rim black, rest of surface cinnamon brown (5 YR 5/8).

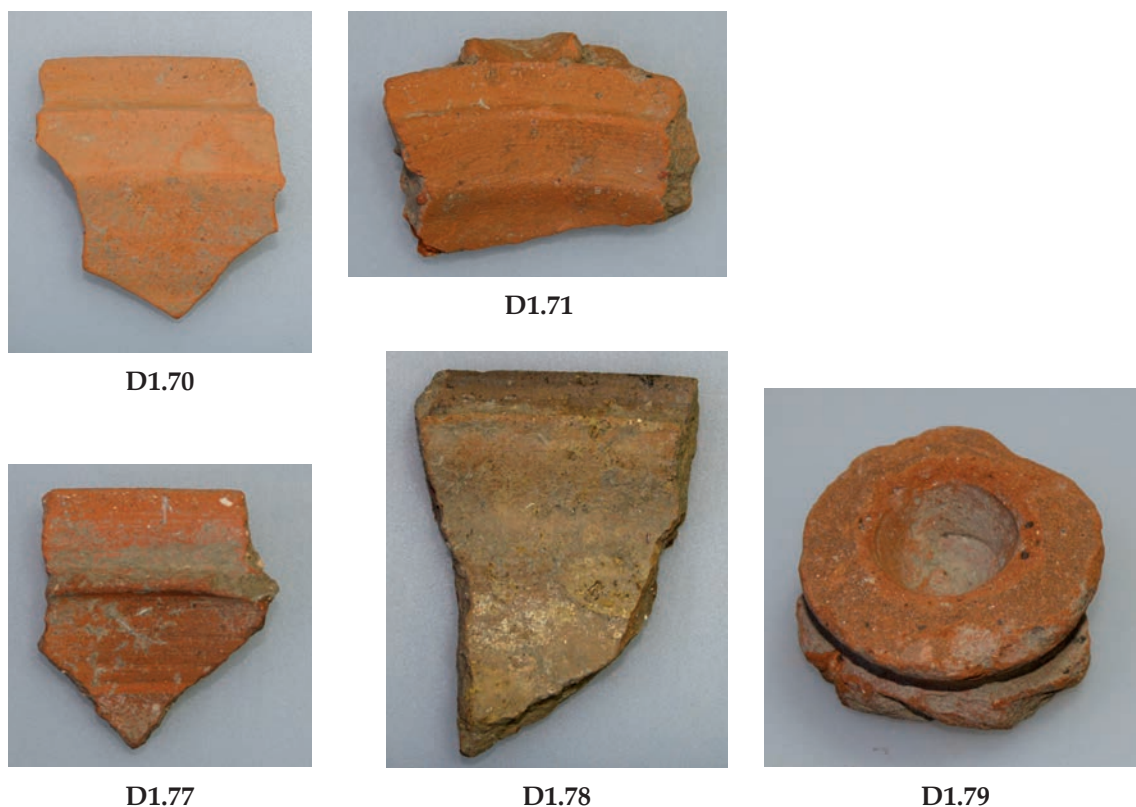


Fig. 9 : Group D level 1 – Coarse ware (scale 1 : 1).

D1.76. Chytra (fig. 8)

Object no. LI-M-BF0104-055

Fr. of rim.

D. of rim 21; pres. H. 1.8.

Fine, soft clay with dense texture, mica, lime and quartz inclusions, pinkish brown (5 YR 5/6), on the surface slightly yellowish.

lime inclusions, grayish brown (7.5 YR 5/1), surface yellowish brown.

Also inventoried: Fr. of wall with carination of one more lopas (Object no. LI-M-BF0104-059).

D1.77. Lopas (figs. 8. 9)

Object no. LI-M-BF0104-051

Fr. of rim with part of a handle.

D. of rim 33; pres. H. 3.4.

Fine, soft clay with dense texture, surface smoothed, micaceous, lime inclusions and lots of quartz particles, grayish brown (ca. 7.5 YR 4/2) and to the inside reddish brown (2.5 YR 5/8), surface orange brown (2.5 YR 6/8-5/8).

D1.79. Lid (figs. 8. 9)

Object no. LI-M-BF0104-064

Complete knob.

D. of knob rim 2.6; pres. H. 2.

Fine clay with dense to slightly porous texture, rough surface, highly micaceous, some lime and lots of quartz inclusions, reddish brown (5 YR 5/8+4/6).

D1.78. Lopas (figs. 8. 9)

Object no. LI-M-BF0104-057

Fr. of rim.

D. of rim 27; pres. H. 4.9.

Fine and hard clay with dense to slightly porous texture, slightly micaceous, some

D1.80. Lid (fig. 8)

Object no. LI-M-BF0104-060

Fr. of rim.

D. of rim 26; pres. H. 1.3.

Fine, soft clay with dense texture, rough surface, some lime and plenty of quartz inclusions, reddish brown (2.5 YR 5/6).

D1.81. Lid (fig. 8)

Object no. LI-M-BF0104-062

Fr. of rim.

D. of rim 26.2; pres. H. 1.

Fine clay with dense texture, surface smoothed, highly micaceous, some quartz inclusions, cinnamon brown (2.5 YR 5/6), surface pinkish beige (2.5 YR 6/6).

Soft clay with fine and dense texture, no visible inclusions, beige (7.5 YR 6/6).

Frs. completely coated, black.

Decoration: on the outside on the rim painted branch, framed by white painted and incised horizontal lines, directly below the lip horizontal row of painted dots between incised lines.

Level 2 (BF 114)

Fine ware: drinking vessels

D2.1. Attic-type skyphos (figs. 10. 11)

Object no. LI-M-BF0114-052

Nearly complete foot.

D. of foot 2.6; pres. H. 2.8.

Very fine clay with dense texture, carefully smoothed surface, a few lime inclusions and black particles, beige (10 YR 8/6), surface light beige (10 YR 8/4-6).

Coating on the inside and on the outside, lower part of the outside recessed, on the outside translucent, black.

D2.5. Kantharos (fig. 10)

Object no. LI-M-BF0114-016

Fr. of rim.

D. of rim 7.5; pres. H. 3.3.

Soft clay with fine and dense texture, no visible inclusions, gray (Gley1 6/10y).

Fr. completely coated, black.

D2.6. Hemispherical bowl (figs. 10. 11)

Object no. LI-M-BF0114-039

Fr. of rim.

D. of rim 15.5; pres. H. 2.9.

Very hard clay with fine and dense texture, some dark inclusions, beige (10 YR 8/4).

Fr. completely coated, smooth and lustrous, on the upper part of the outside silver metallic reflective (traces of chipped paint?), black.

Decoration: on the inside below the lip 3–4 horizontal painted lines, dark red.

D2.2. Attic-or Gnathia-type skyphos (fig. 11)

Object no. LI-M-BF0114-066

Fr. of rim with approach of a handle.

D. of rim ca. 4; pres. H. ca. 2.

Soft clay with very fine and dense texture, a few black inclusions, beige (7.5 YR 7/6).

Fr. completely coated, on the inside slightly lustrous in places, black.

D2.7. Conical cup (fig. 10)

Object no. LI-M-BF0114-029

Fr. of rim.

D. of rim 14; pres. H. 3.2.

Soft clay with a few black inclusions, light grayish brown.

Fr. completely coated, black.

Decoration: on the inside below the lip two painted horizontal lines, traces of similar decoration on the outside.

D2.3. Gnathia-type skyphos (fig. 10)

Object no. LI-M-BF0114-048

Numerous frs. of rim and wall, partly joining.

D. of rim 9.5; pres. H. 3.7.

Soft clay with fine porous texture, black particles, light beige (2.5 Y 7/4).

Frs. completely coated, coating very thin and dull, black.

D2.8. Bowl (figs. 10. 11)

Object no. LI-M-BF0114-046

Two frs. of the rim, not joining.

D. of rim 22; pres. H. 2.5.

Hard clay without visible inclusions, beige (7.5 YR 7/6).

Frs. completely coated, on the inside thin and translucent, black, on the inside also beige.

D2.4. Kantharos (figs. 10. 11)

Object no. LI-M-BF0114-043

One fr. of the rim and one of the wall, not joining.

D. of rim 8.5; pres. H. 2.6.

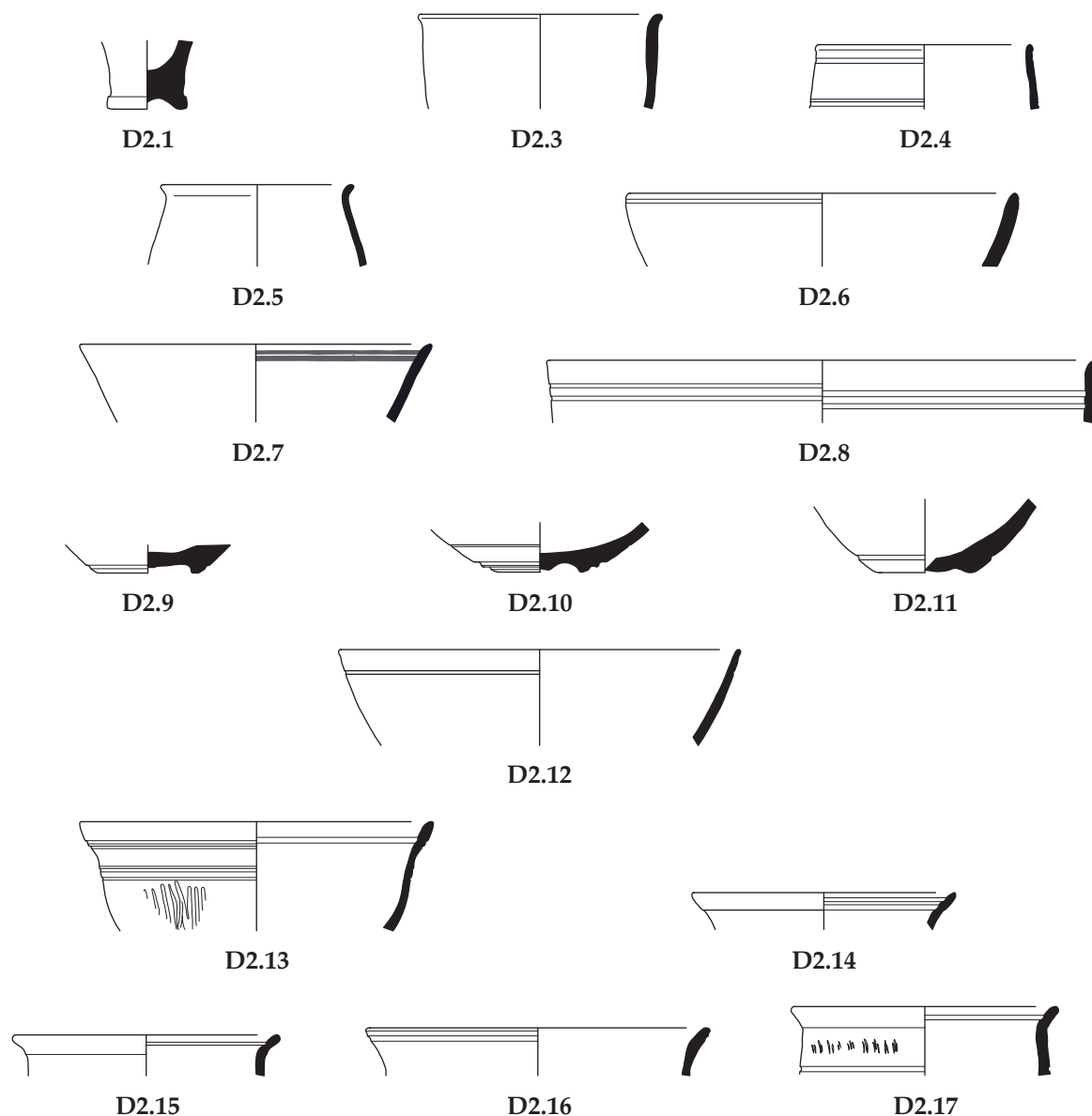


Fig. 10 : Group D level 2 – Fine ware: drinking vessels (scale 1 : 3).

Decoration: on the outside below the lip two horizontal grooves, the lower one filled with white paint, on the inside also pair of horizontal grooves.

D2.9. Bowl (fig. 10)

Object no. LI-M-BF0114-021

Fr. of foot.

D. of foot 3.6; pres. H. 1.1.

Clay with fine and dense texture, a few black particles and lime inclusions, beige (7.5 YR 7/4).

Fr. completely coated, patchy, black to dark brown.

D2.10. Bowl (figs. 10. 11)

Object no. LI-M-BF0114-025

Complete foot.

D. of foot 3.3; pres. H. 2.

Soft clay with fine and dense texture, relatively large black inclusions, lime inclusions, grayish beige (10 YR 7/3).

Fr. completely coated, patchy and translucent, black to dark brown (5 YR 4/3).

Decoration: on the inside three concentric circles/scratched lines around the center of the floor.



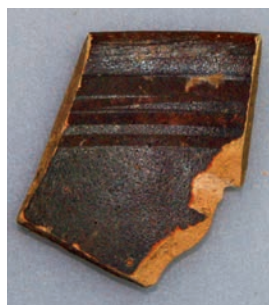
D2.1



D2.2



D2.4



D2.6 (Inside)



D2.6 (Outside)



D2.8 (Outside)



D2.10



D2.13



D2.16



D2.17

Fig. 11 : Group D level 2 – Fine ware: drinking vessels (scale 1 : 1).

D2.11. Bowl (fig. 10)

Object no. LI-M-BF0114-050

Four frs. of the foot, joining.

D. of foot 3.6; pres. H. 3.

Soft and easily breaking clay with very fine and dense texture, carefully smoothed surface, a few lime inclusions and black particles, beige (10 YR 6/4) with slightly grayish core.

Frs. completely coated, patchy, slightly lustrous, light brown (5 YR 5/8) and beige (10 YR 5/6).

D2.12. Bowl (fig. 10)

Object no. LI-M-BF0114-018

Fr. of rim.

D. of rim 16; pres. H. 3.9.

Soft and highly micaceous clay, black particles, pale brown (10 YR 6/4).

Fr. completely coated, patchy, brown (2.5 YR 5/3) and beige (5 YR 6/6).

Decoration: groove on the outside below the lip.

D2.13. Bowl with outturned rim (figs. 10. 11)

Object no. LI-M-BF0114-031

Fr. of rim.

D. of rim 14; pres. H. 4.4.

Very hard and fine clay with dense texture, slightly micaceous, black inclusions, gray (Gley1 5/10Y bzw. 2.5 YR 6/2).

Fr. completely coated, slightly lustrous, black.

Decoration: on the outside below the rim two pairs of horizontal grooves, wall below decorated with vertical grooves.

D2.14. Bowl with outturned rim (fig. 10)

Object no. LI-M-BF0114-028

Fr. of rim.

D. of rim 10.5; pres. H. 1.5.

Relatively soft clay with some black particles and lime inclusions, light brown, slightly greenish.

Fr. completely coated, brown (10 YR 5/4-6)

Decoration: on the inside below the lip pair of grooves.

D2.15. Bowl with outturned rim (fig. 10)

Object no. LI-M-BF0114-019

Fr. of rim.

D. of rim 10.5; pres. H. 1.7.

Hard clay with dense texture, some black particles, gray (5 YR 6/1).

Fr. completely coated, black.

Decoration: horizontal groove on the inside below the lip.

D2.16. Bowl with outturned rim (figs. 10. 11)

Object no. LI-M-BF0114-023

Fr. of rim.

D. of rim 13.5; pres. H. 1.9.

Hard and fine clay without visible inclusions, dark gray (7.5 YR 5/1).

Fr. completely coated, relatively thick and slightly lustrous coating, black to dark gray.

Decoration: horizontal groove on the outside of the lip.

D2.17. Bowl with outturned rim (figs. 10. 11)

Object no. LI-M-BF0114-030

Fr. of rim.

D. of rim 10.5; pres. H. 2.8.

Relatively hard and slightly porous clay, a few dark particles and lime inclusions, gray (Gley1 6/N).

Fr. completely coated, black.

Decoration: on the outside on the rim rouletting.

Fine ware: vessels for food service and closed shapes

D2.18. Small bowl with rolled rim (fig. 12)

Object no. LI-M-BF0114-010

Fr. of rim.

D. of rim 10.5; pres. H. 1.7.

Relatively soft clay without visible inclusions, beige (7.5 YR 7/3, surface 10 YR 8/3).

Coating on inside only, with some drippings on the outside, black.

D2.19. Bowl with incurved rim (fig. 12)

Object no. LI-M-BF0114-002

Fr. of rim.

D. of rim 17.5; pres. H. 2.1.

Hard clay with a few lime inclusions and dark particles, pinkish brown (5 YR 6/4).

Fr. completely coated, patchy, black to dark reddish brown (2.5 YR 3/4).

D2.20. Bowl with incurved rim (fig. 12)

Object no. LI-M-BF0114-007

Fr. of rim.

D. of rim 25; pres. H. 2.7.

Fine clay with some lime inclusions, beige (7.5 YR 7/6).

Fr. completely coated, black.

D2.21. Bowl with incurved rim (fig. 12)

Object no. LI-M-BF0114-001

Fr. of rim.

D. of rim 28; pres. H. 3.4.

Fine, soft clay with dense texture, a few dark particles and lime inclusions, pinkish brown (5 YR 6/6), surface pale (7.5 YR 8/4).

Coating on the inside only, patchy and translucent, black.

D2.22. Bowl with incurved rim (fig. 12)

Object no. LI-M-BF0114-003

Fr. of rim.

D. of rim 28; pres. H. 2.2.

Fine clay without visible inclusions, pinkish brown (5 YR 6/4).

Fr. completely coated, translucent, black.

D2.23. Bowl with incurved rim (fig. 12)

Object no. LI-M-BF0114-005

Fr. of rim.

D. of rim 14; pres. H. 2.5.

Fine, hard clay with carefully smoothed surface, a few black inclusions, pinkish brown (2.5 YR 6/6), surface pinkish beige (5 YR 8/4-7/4).

Only few traces of coating, completely worn off.

D2.24. Bowl with incurved rim (fig. 12)

Object no. LI-M-BF0114-006

Fr. of rim.

D. of rim 13; pres. H. 3.4.

Fine, hard clay with a few lime inclusions and dark particles, pinkish brown (5 YR 6/4, surface 2.5 YR 6/4).

Only few traces of coating, black.

Also inventoried: Bowl of the same type (object no. LI-M-BF0114-067).

D2.25. Bowl (figs. 12, 14)

Object no. LI-M-BF0114-056

Complete disc foot.

D. of foot 4.2; pres. H. 2.4.

Soft, fine clay with carefully smoothed surface, a few dark particles and lime inclusions, pinkish beige (7.5 YR 6/4, surface ca. 7.5 YR 8/4).

Coating on the inside, patchy, brown (2.5 YR 4/4).

Decoration: on the inside around the centre of the foot spiral groove, on the outside above the foot fine groove.

D2.26. Bowl (fig. 12)

Object no. LI-M-BF0114-051

Fr. of disc foot.

D. of foot 4.2; pres. H. 2.1.

Fine, hard clay with carefully smoothed surface, no visible inclusions, pinkish beige (7.5 YR 7/4), surface a little brighter.

Coating on the inside, black to dark brown.

D2.27. Bowl (fig. 12)

Object no. LI-M-BF0114-053

Nearly complete foot.

D. of foot 3.6; pres. H. 1.9.

Hard, fine clay with carefully smoothed surface, a few dark inclusions, grayish beige (ca. 10 YR 6/3).

Coating on the inside, patchy and translucent, black to dark brown.

D2.28. Bowl (fig. 12)

Object no. LI-M-BF0114-055

Complete foot.

D. of foot 4.2; pres. H. 2.

Soft and easily breaking clay with very fine and dense texture, carefully smoothed surface, some lime inclusions, pinkish beige (ca. 7.5 YR 7/6), surface pale beige.

Coating on the inside, silver metallic shining, black to dark brown.

Remark: traces of a sponge on the inside.

D2.29. Bowl (fig. 12)

Object no. LI-M-BF0114-054

Fr. of foot.

D. of foot 6.8; pres. H. 1.6.

Hard, fine clay with smoothed surface, no visible inclusions, pinkish brown (7.5 YR 6/4), surface beige (10 YR 7/4, a little more reddish).

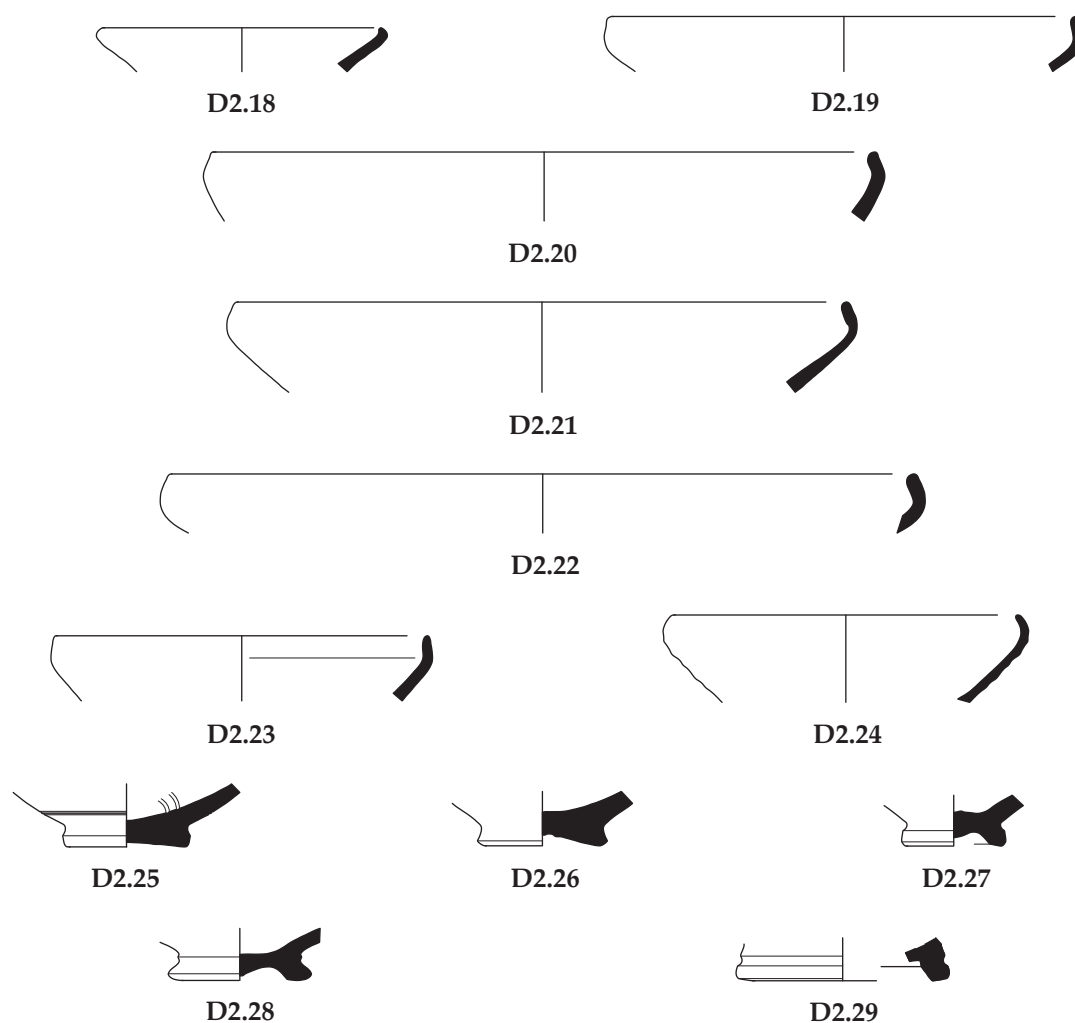


Fig. 12 : Group D level 2 – Fine ware: bowls (scale 1 : 3).

Coating on the inside and on parts of the outside, black.

D2.30. Plate (fig. 13)

Object no. LI-M-BF0114-008

Fr. of rim.

D. of rim 16.5; pres. H. 2.6.

Hard, fine clay with a few black inclusions, pinkish brown (5 YR 6/4).

Fr. completely coated, patchy, black.

D2.31. Plate (fig. 13)

Object no. LI-M-BF0114-012

Fr. of rim.

D. of rim 11.5; pres. H. 1.4.

Hard, fine clay with a few lime inclusions, pinkish brown (2.5 YR 6/4, surface 2.5 YR 6/3).

Coating on the inside, black.

D2.32. Plate (fig. 13)

Object no. LI-M-BF0114-014

Fr. of rim.

D. of rim 15; pres. H. 2.7.

Fine, hard clay without visible inclusions, pinkish brown (2.5 YR 6/4), surface pale beige (10 YR 8/3).

Coating on the inside and on parts of the outside, black.

D2.33. Plate (fig. 13)

Object no. LI-M-BF0114-017

Fr. of rim.

D. of rim 16; pres. H. 3.9.

Fine, hard clay with carefully smoothed surface, lime inclusions and black particles, beige (7.5 YR 7/6), surface pinkish beige (7.5 YR 8/4).

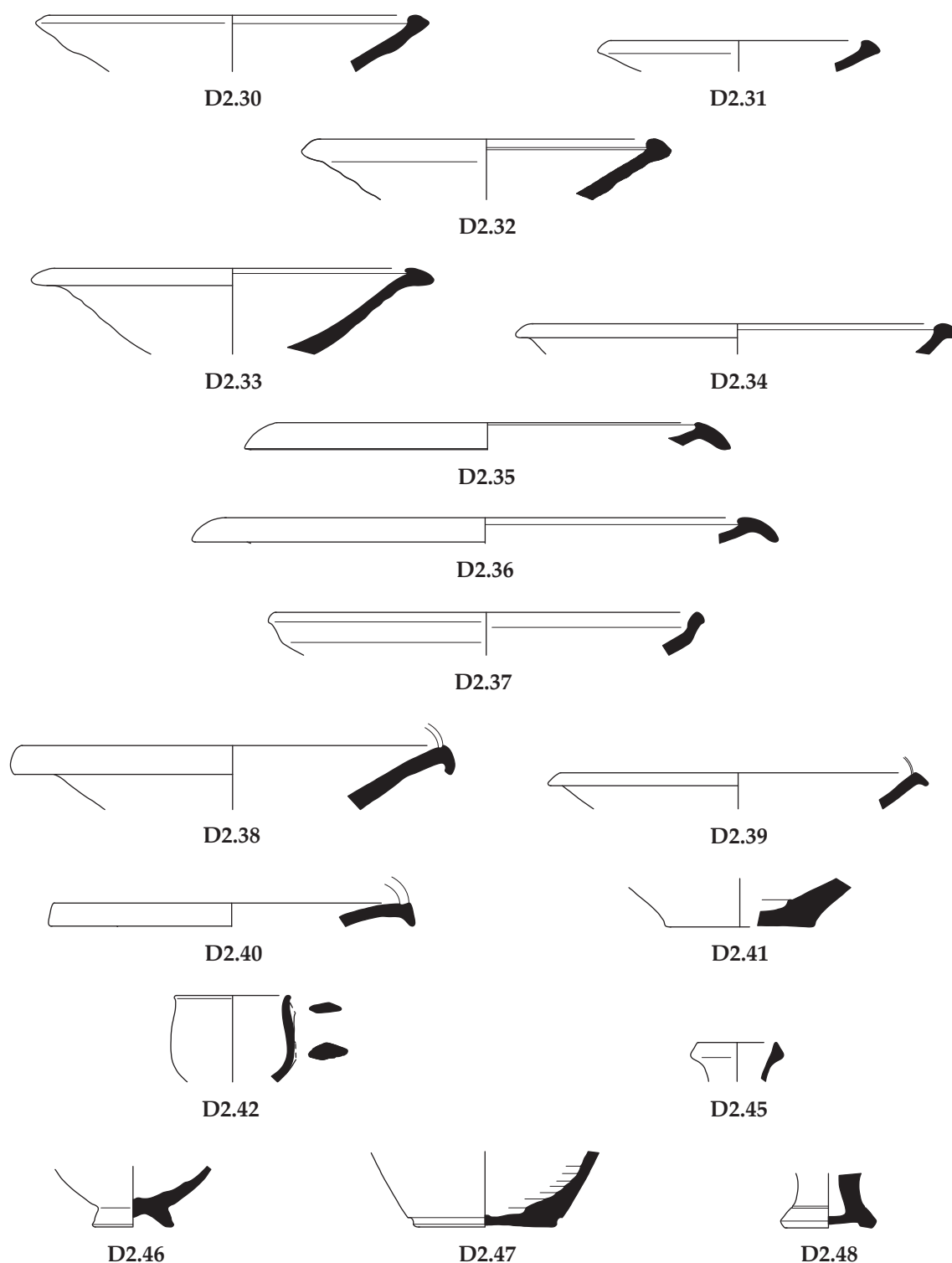


Fig. 13 : Group D level 2 – Fine ware: plates, fish plates, kyathos, closed shapes (scale 1 : 3).

Coating on the inside, translucent, black to dark brown.

D2.34. Plate (fig. 13)

Object no. LI-M-BF0114-009

Fr. of rim.

D. of rim 18.5; pres. H. 1.4.

Hard, fine clay with a few black particles and lime inclusions, pinkish brown (2.5 YR 6/4).

Coating only pres. in few traces, black.

D2.35. Plate with broad rim (fig. 13)

Object no. LI-M-BF0114-024

Fr. of rim.

D. of rim 19; pres. H. 1.2.

Soft, fine clay, highly micaceous, lime inclusions and a few black particles, grayish brown (10 YR 6/2).

Fr. completely coated, thin, dull, rough, black to dark brown, slightly greenish in places.

D2.36. Plate with broad rim (fig. 13)

Object no. LI-M-BF0114-026

Fr. of rim.

D. of rim 23.5; pres. H. 1.2.

Fine, hard clay with a few dark inclusions, pinkish brown (5 YR 6/4).

Fr. completely coated, thin, dull, in places slightly lustrous, black.

D2.37. Plate with upturned rim (fig. 13)

Object no. LI-M-BF0114-011

Fr. of rim.

D. of rim 19; pres. H. 2.

Hard, fine clay with a few lime inclusions, pinkish brown (2.5 YR 6/4).

Fr. completely coated, thin, dull, translucent, black.

D2.38. Fish plate (fig. 13)

Object no. LI-M-BF0114-004

Fr. of rim.

D. of rim 19; pres. H. 2.9.

Hard, fine clay with smoothed surface, a few dark particles and lime inclusions, pinkish brown (2.5 YR 6/4), surface pinkish brown (2.5 YR 7/4) and beige (7.5 YR 8/4).

Coating on the inside only, black.

D2.39. Fish plate (fig. 13)

Object no. LI-M-BF0114-013

Fr. of rim.

D. of rim 16; pres. H. 1.7.

Fine hard clay without visible inclusions, pinkish brown (2.5 YR 7/6).

Fr. completely coated, black.

D2.40. Fish plate (fig. 13)

Object no. LI-M-BF0114-022

Two frs. of the rim, joining.

D. of rim 16; pres. H. 1.1.

Fine, hard clay with smoothed surface, lime inclusions and black particles, pinkish brown (5 YR 6/4), surface pinkish beige (5 YR 8/4-7/4).

Coating on the inside only, black.

D2.41. Fish plate (fig. 13)

Object no. LI-M-BF0114-033

Half the bottom.

D. of foot 6.2; pres. H. 2.2.

Hard, slightly porous clay, micaceous, a few lime inclusions, pinkish brown (2.5 YR 6/6), surface pinkish beige.

Coating completely worn of.

D2.42. Kyathos(?) (fig. 13)

Object no. LI-M-BF0114-049

Fr. of rim with approach of a vertical handle.

D. of rim 5; pres. H. 3.9.

Soft clay with a few lime inclusions and dark particles, beige (7.5 YR 7/6).

Fr. completely coated, reddish brown (2.5 YR 5/8).

D2.43. Oinochoe (fig. 14)

Object no. LI-M-BF0114-069

Fr. of handle with part of the rim.

Dimensions: 4.6 × 3.2; D. of handle 1.6.

Fine, hard clay with a few dark particles and some fine quartz inclusions, beige (5 YR 5/8), surface pinkish beige (ca. 7.5 YR 7/6).

D2.44. Unguentarium (fig. 14)

Object no. LI-M-BF0114-064

Fr. of wall from upper part of the vessel.

Pres. H. 5.4; maximal width 6.

Hard, fine clay with carefully smoothed surface, a few black particles and lime inclusions, pinkish brown core (2.5 YR 6/6), surface pale brown (ca. 7.5 YR 6/3).

Coating on the inside, thin, patchy, slightly lustrous, black to dark brown.

Decoration: on the upper part of the shoulder three painted horizontal lines, black.

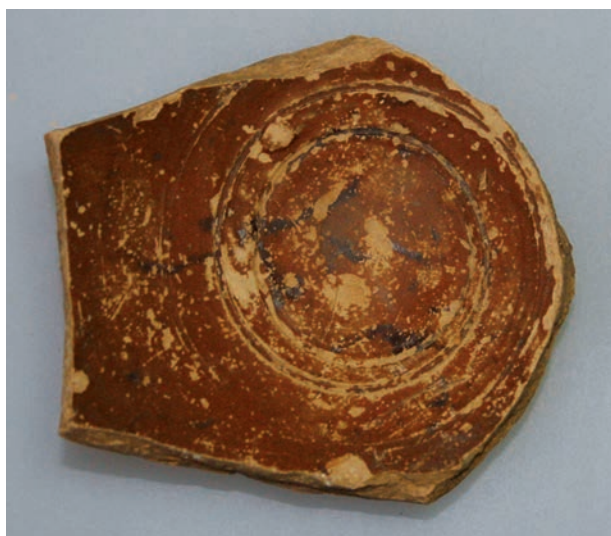
Remark: on the inside traces of a sponge.

D2.45. Jug/lagynos (fig. 13)

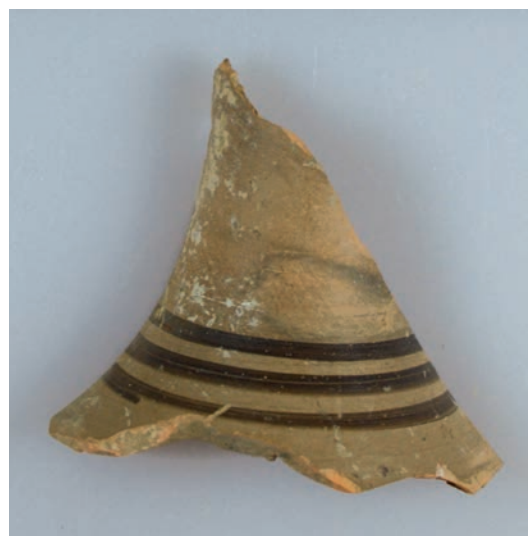
Object no. LI-M-BF0114-020

Fr. of the mouth with lip.

D. of rim 3.5; pres. H. 1.8.



D2.25



D2.44



D2.43



D2.49



D2.50

Fig. 14 : Group D level 2 – Fine ware: bowls, closed shapes, fragments with painted decoration (scale 1 : 1).

Hard and slightly porous clay with numerous lime inclusions, pinkish beige (5 YR 6/3) with gray core.
Fr. completely coated, black.

D2.46. Jug (fig. 13)

Object no. LI-M-BF0114-027

Fr. of the foot.

D. of foot 3.4; pres. H. 2.8.

Very hard, fine clay with carefully smoothed surface, lime inclusions, dark gray (ca. 5 YR 4/1), surface light gray (10 YR 6/1).
Only few traces of coating on the outside, translucent, black.

D2.47. Jug (fig. 13)

Object no. LI-M-BF0114-040

Fr. of bottom.

D. of bottom 6; pres. H. 3.4.

Hard, fine clay with numerous dark particles and lime inclusions, slightly micaceous, pale pinkish beige (7.5 YR 7/3).

Fr. completely coated on the outside, thick, slightly lustrous, black.

D2.48. Closed shape (fig. 13)

Flask or unguentarium?

Object no. LI-M-BF0114-015

Complete foot.

D. of foot 3.8; pres. H. 2.5.

Very hard, fine clay with carefully smoothed surface, lime inclusions, grayish beige to the inside, to the outside beige (7.5 YR 7/6, surface 7.5 YR 8/3).

Few traces of coating on the inside.

D2.49. Bowl (fig. 14)

Object no. LI-M-BF0114-068

Small fr. of rim with slightly outturned lip.



Fig. 15 : Group D level 2 – Fine ware: moldmade bowls (scale 1 : 1).

D. of rim ca. 15; pres. H. 1.7.
Hard, fine clay without visible inclusions, beige (10 YR 6/6).

Fr. completely coated, coating thin and translucent, on the inside slightly lustrous, beige (7.5 YR 6/6).

Decoration: on the outside below the rim two painted horizontal lines, black.

D2.50. Bowl (fig. 14)

Object no. LI-M-BF0114-065

Fr. of wall, dimensions 3.6 × 1.8.

Hard, fine clay with a few lime inclusions, pinkish beige (7.5 YR 6/4).

Fr. completely coated, black.

Decoration: two painted horizontal lines, one red, one white.

Moldmade fine ware

D2.51. Moldmade bowl (fig. 15)

Object no. LI-M-BF0114-058

Complete bottom of the bowl.

D. of medallion 3.5; pres. H. 0.8.

Hard, fine clay with a few lime inclusions and dark particles, pinkish brown (2.5 YR 5/8).

Fr. completely coated, very thin and translucent coating, rough and dull, reddish brown (between 10 R 6/8 und 5/8).

Decoration: in the medallion rosette made of long petals and stems around a knob, surrounded by a line, above the line imbricate leaf decoration, pres. part of at least four staggered rows of small leaves with raised outline and leaf veins.

For the imbricate leaves compare D1.65.

From the same bowl?

D2.52. Moldmade bowl (fig. 15)

Object no. LI-M-BF0114-057

Fr. of wall with lower part of outcurving rim above three horizontal grooves, dimensions 5.1 × 4.6.

Hard and slightly porous clay without visible inclusions, pinkish beige (7.5 YR 7/6). Fr. completely coated, thin and dull coating, slightly lustrous in places, black to dark brown.

Decoration: parts of two relief zones separated by a line, in the upper zone large horizontal ivy tendril, in the lower zone small rosette-like flower on a curved stem with a spiral tendril, maybe part of a calyx.

D2.53. Moldmade bowl (fig. 15)

Object no. LI-M-BF0114-059

Fr. of wall, 2 × 2.3.

Soft and highly micaceous clay with a few black inclusions, cinnamon brown (2.5 YR 5/8).

Fr. completely coated, slightly lustrous, on the inside reddish brown (2.5 YR 4/8), on the outside brown.

Decoration: below/above a line bundle of five lancet leaves with berries on a stem besides the leaf in the middle (laurel?).

D2.54. Moldmade bowl (fig. 15)

Object no. LI-M-BF0114-061

Fr. of wall, 2.5 × 2.2.

Soft and slightly porous clay without visible inclusions, light beige (ca. 2.5 Y 8/4).

Fr. completely coated, thin and translucent coating, patchy and dull, on the outside black, on the inside reddish brown (10 R 5/8).
 Decoration: part of a calyx, lower section of an acanthus leaf.

D2.55. Moldmade bowl (fig. 15)

Object no. LI-M-BF0114-062

Fr. of wall, 2.1 × 2.6.

Soft, fine clay without visible inclusions, pinkish beige (5 YR 6/6).

Fr. completely coated, silver metallic reflecting, on the outside black, on the inside brown (ca. 5 YR 4/4).

Decoration: part of a calyx below a line, on the left part of an acanthus leaf, on the right part of another, different leaf, between the leaves vertical spiral tendril.

D2.56. Moldmade bowl (fig. 15)

Object no. LI-M-BF0114-071

Two wall frs. from the rim zone of the bowl, not joining.

Decoration: row of small rosettes between lines, in the lower part of the frs. traces of further floral decoration.

Probably produced in Ephesos.

Also inventoried: small frs. of two more moldmade bowls (object no. LI-M-BF0114-060 /-063).

Plain and coarse wares

D2.57. Jar (fig. 16)

Object no. LI-M-BF0114-037

Fr. of rim.

D. of rim 7; pres. H. 3.6.

Soft clay with carefully smoothed surface, a few lime inclusions, pinkish brown (2.5 YR 5/6, surface pale 2.5 YR 6/6).

Decoration: on the outside below the lip three horizontal grooves.

D2.58. Jar (fig. 16)

Object no. LI-M-BF0114-035

Fr. of bottom.

D. of foot 11.5; pres. H. 3.1.

Soft clay with carefully smoothed surface, some dark inclusions, pale beige (7.5 YR 7/4), surface beige (7.5 YR 8/3).

Also inventoried: fr. of a strap handle, belonging to a jar or lagynos (object no. LI-M-BF0114-070).

D2.59. Chytra (fig. 16)

Object no. LI-M-BF0114-042

Fr. of rim.

D. of rim 16; pres. H. 2.1.

Hard clay with dense to slightly porous texture, micaceous, pinkish brown (2.5 YR 5/8), surface orange brown (2.5 YR 6/8).

D2.60. Chytra (fig. 16)

Object no. LI-M-BF0114-036

Fr. of rim.

D. of rim 18.5; pres. H. 1.1.

Soft clay with carefully smoothed surface, some dark particles and lime inclusions, slightly micaceous, pinkish brown (5 YR 6/6), surface pale pinkish beige (ca. 5 YR 7/6).

D2.61. Chytra (fig. 16)

Object no. LI-M-BF0114-038

Small fr. of rim.

D. of rim 16.5; pres. H. 1.1.

Soft clay with rough surface, a few quartz inclusions, pinkish brown (2.5 YR 5/8), a little brighter on the surface (ca. 2.5 YR 6/8).

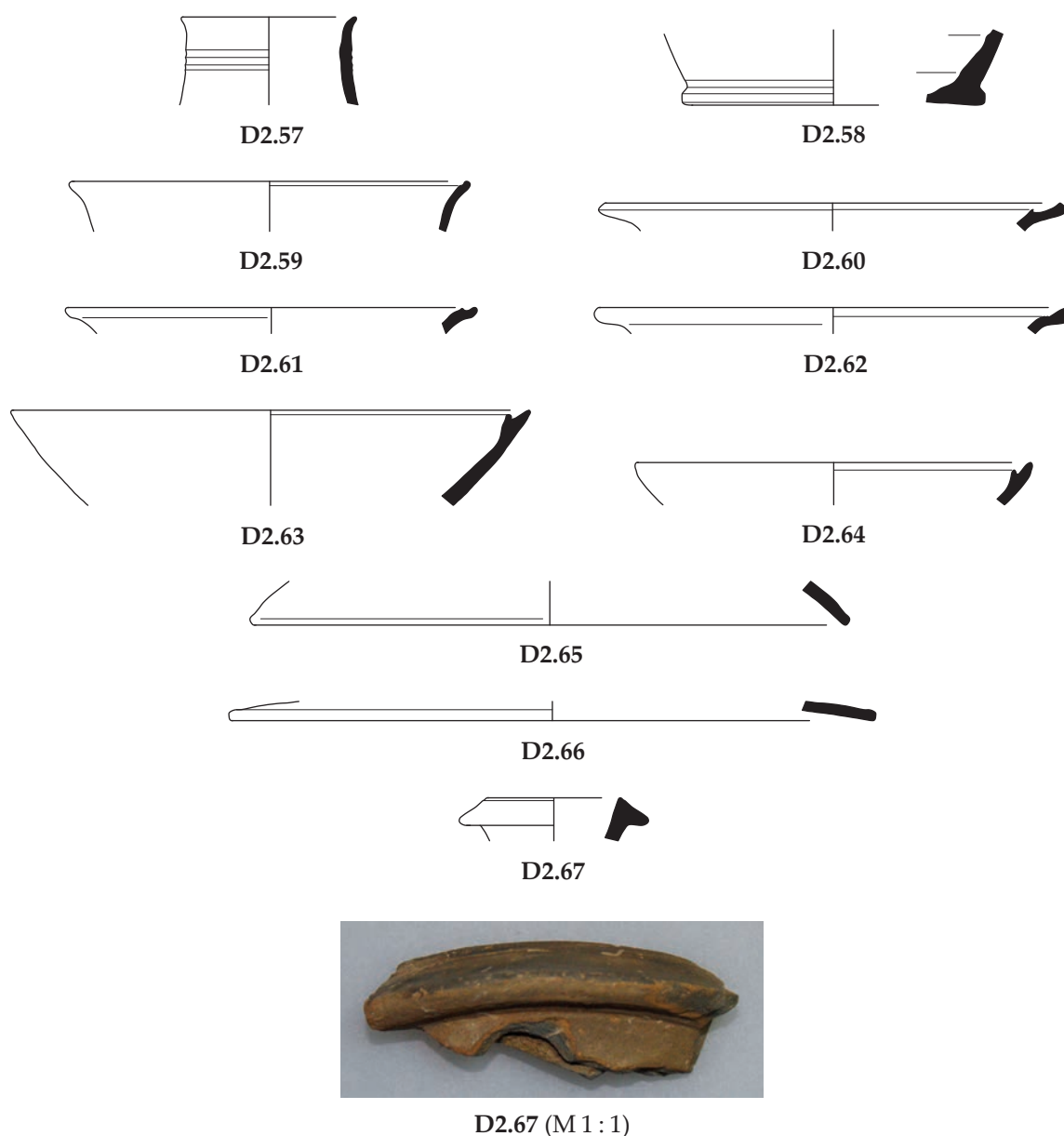


Fig. 16 : Group D level 2 – Plain and coarse wares (scale of drawings 1 : 3).

D2.62. Chytra (fig. 16)

Object no. LI-M-BF0114-041

Fr. of rim.

D. of rim 19; pres. H. 1.1.

Hard clay with some quartz inclusions, dark gray (7.5 YR 5/1) with light gray core (7.5 YR 6/1), on the surface orange beige (2.5 YR 6/6).

Soft and slightly porous clay with numerous lime inclusions and quartz particles, pinkish brown (2.5 YR 5/89, surface of the inside orange (2.5 YR 6/8) and on the outside brown (ca. 5 YR 5/2).

D2.64. Lopas (fig. 16)

Object no. LI-M-BF0114-045

Small fr. of rim.

D. of rim 16; pres. H. 1.7.

Very soft and porous clay with rough surface, numerous quartz inclusions, reddish brown (2.5 YR 4/3, surface ca. 2.5 YR 5/3).

D2.63. Lopas (fig. 16)

Object no. LI-M-BF0114-034

Fr. of rim.

D. of rim 21; pres. H. 3.9.

D2.65. Lid (fig. 16)

Object no. LI-M-BF0114-032

Fr. of rim.

D. of rim 24; pres. H. 1.8.

Soft clay with dense to slightly porous texture and rough surface, numerous lime inclusions and quartz particles, beige (5 YR 5/8), surface pinkish beige (5 YR 6/6), rim burned.

D2.66. Lid (fig. 16)

Object no. LI-M-BF0114-044

Fr. of rim.

D. of rim 26; pres. H. 0.8.

Soft and slightly porous clay with lime and quartz inclusions, reddish brown (2.5 YR 4/6, surface 2.5 YR 5/4).

D2.67. Jug with narrow mouth (lagynos?) (fig. 16)

Object no. LI-M-BF0114-047

Fr. of mouth.

D. of rim 5.4; pres. H. 1.8.

Very hard clay with fine and dense texture, rough surface, lime inclusions, dark gray (1 4/N), surface pinkish brown (7.5 YR 6/3). Few traces of coating on the lip and the inside, thin, dull, black.

Most likely not produced in a local workshop.

Level 3 (BF 120)

Fine ware: drinking vessels

D3.1. Attic-type skyphos (fig. 17)

Object no. LI-M-BF0120-005

Fr. of foot.

D. of foot 3.3; pres. H. 3.1.

Fine clay with smoothed surface, black / dark inclusions, pinkish brown (7.5 YR 6/6), surface pale beige (10 YR 8/4-7/4).

Coating on the inside, thin, translucent, dull, dark brown.

D3.2. Miniature skyphos

(or small unguentarium?) (figs. 17. 18)

Object no. LI-M-BF0120-002

Half the vessel with complete foot.

D. of foot 2.8; pres. H. 3.

Hard, very fine clay, surface carefully smoothed, no visible inclusions, pale beige (10 YR 7/6, surface 10 YR 8/4).

Coating on the inside and on the upper part of the outside, thin, dull, black to dark brown.

D3.3. Kantharos (fig. 17)

Object no. LI-M-BF0120-008

Four small frs. of the rim, not joining.

D. of rim 14; pres. H. 2.7.

Fine clay without visible inclusions, pale pinkish beige (7.5 YR 7/4).

Frs. completely coated, black.

Decoration: pair of horizontal grooves below the rim.

D3.4. Kantharos (figs. 17. 18)

Object no. LI-M-BF0120-007

Three frs. of the rim, joining.

D. of rim 8; pres. H. 3.9.

Fine, hard clay with black / dark inclusions, pale beige (7.5 YR 7/6).

Frs. completely coated, patchy and translucent in places, on the inside beige (5 YR 6/8), on the outside dark beige (5 YR 5/6) with black patches.

Decoration: horizontal pair of grooves below the rim.

D3.5. Kantharos (figs. 17. 18)

Object no. LI-M-BF0120-009

Small frs. of rim and wall, joining.

D. of rim 8; pres. H. 4.8.

Soft clay without visible inclusions, pale pinkish brown (7.5 YR 7/6).

Frs. completely coated, patchy and translucent in places, black and dark beige (5 YR 5/6)

Decoration: painted decoration on the rim, below the lip remains of two horizontal lines above a lancet leaf (?) and a scratched line, wall below the rim covered with vertical grooves.

D3.6. Bowl with outcurved lip (fig. 17)

Object no. LI-M-BF0120-014

Small fr. of the rim.

D. of rim 12; pres. H. 1.4.

Fine clay with a few dark particles, pinkish brown (7.5 YR 6/3).

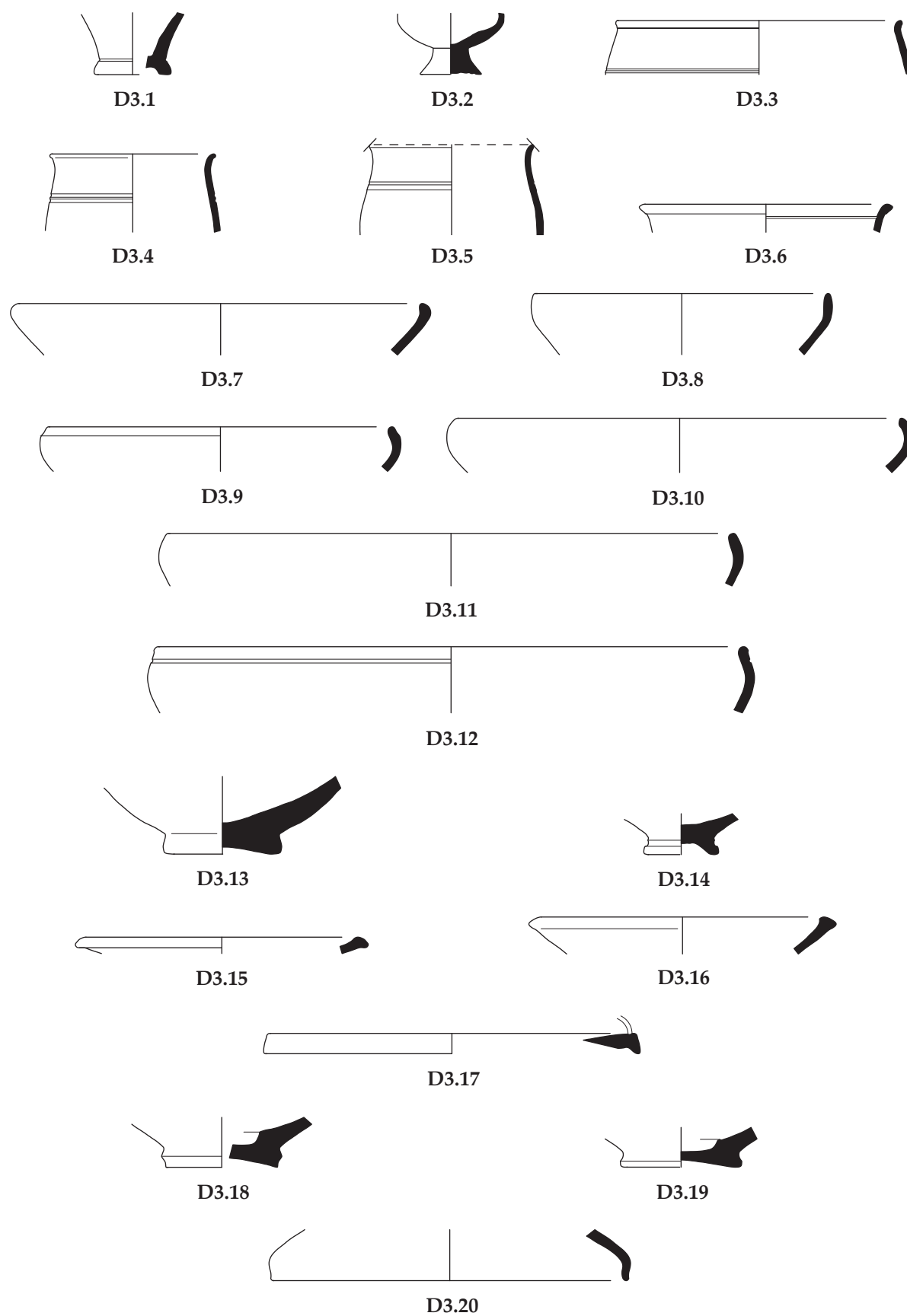


Fig. 17 : Group D level 3 – Fine ware (scale 1 : 3).

Fr. completely coated, thin and translucent, black to dark brown.

Decoration: on the outside below the lip horizontal groove.

Fine ware: vessels for food service and closed shapes

D3.7. Bowl with incurved rim (fig. 17)

Object no. LI-M-BF0120-016

Fr. of rim.

D. of rim 20; pres. H. 2.6.

Fine, soft clay with a few lime inclusions and dark particles, pinkish brown (5 YR 6/4).

Fr. completely coated, thin, translucent in places, black to reddish brown (2.5 YR 3/4).

D3.8. Bowl with incurved rim (fig. 17)

Object no. LI-M-BF0120-024

Fr. of rim.

D. of rim 14.5; pres. H. 3.

Hard, fine clay with smoothed surface, slightly micaceous, pinkish brown (5 YR 7/6), surface a little brighter.

Coating on the inside and on the upper part of the outside, patchy and translucent, black with patches of beige (ca. 5 YR 5/6).

D3.9. Bowl with incurved rim (fig. 17)

Object no. LI-M-BF0120-013

Two frs. of the rim, joining.

D. of rim 17; pres. H. 2.2.

Fine clay with a few lime inclusions and some dark particles, pale pinkish brown (7.5 YR 7/3), surface pale beige (10 YR 7/4).

Fr. completely coated, black.

D3.10. Bowl with incurved rim (fig. 17)

Object no. LI-M-BF0120-017

Fr. of rim.

D. of rim 22; pres. H. 2.7.

Hard, fine clay without visible inclusions, pinkish brown (2.5 YR 6/4).

Fr. completely coated, translucent, patchy, black to gray.

D3.11. Bowl with incurved rim (fig. 17)

Object no. LI-M-BF0120-026

Fr. of rim.

D. of rim 28; pres. H. 2.6.

Hard, fine clay with smoothed surface, micaceous, pale beige (7.5 YR 7/4).

Fr. completely coated, patchy, translucent, black to dark brown.

D3.12. Bowl (fig. 17)

Object no. LI-M-BF0120-011

Fr. of rim.

D. of rim 29; pres. H. 3.3.

Hard micaceous clay with some black inclusions, pinkish brown (7.5 YR 7/4).

Fr. completely coated, coating patchy and translucent, black to dark brown.

Decoration: horizontal groove on the outside below the lip.

D3.13. Bowl / open shape (fig. 17)

Object no. LI-M-BF0120-004

Fr. of disc foot.

D. of foot 4.8; pres. H. 3.9.

Fine clay with carefully smoothed surface, a few lime inclusions, some dark particles, pale pinkish brown (7.5 YR 7/4), surface a little brighter.

Coating on the inside, black.

D3.14. Bowl / open shape (fig. 17)

Object no. LI-M-BF0120-003

Complete foot.

D. of foot 3.2; pres. H. 2.

Fine clay with smoothed surface, some dark inclusions, pale pinkish brown (7.5 YR 7/6-6/6), surface pale beige (10 YR 8/4).

Coating on the inside and on the upper part of the outside, thin and translucent, on the outside dark brown, on the inside dark beige (7.5 YR 7/8-6/8).

D3.15. Plate (fig. 17)

Object no. LI-M-BF0120-018

Fr. of rim.

D. of rim 13.5; pres. H. 0.8.

D3.16. Plate (fig. 17)

Object no. LI-M-BF0120-012

Two frs. of the rim, joining.

D. of rim 14; pres. H. 1.9.

Hard and fine clay with a few dark and red inclusions, slightly micaceous, grayish brown (7.5 YR 6/2), surface pale beige (10 YR 8/4).



D3.2



D3.4



D3.5



D3.19



D3.21

Fig. 18 : Group D level 3 – Fine ware (scale 1 : 1).

Coating on the inside only, thin, translucent and patchy, reddish brown (2.5 YR 3/4).

D3.17. Fish plate (fig. 17)

Object no. LI-M-BF0120-028

Fr. of rim.

D. of rim 19; pres. H. 1.

Fine and slightly micaceous clay, pinkish brown (5 YR 6/4).

Fr. completely coated, black with patches of dark brown (2.5 YR 4/4).

D3.18. Fish plate (fig. 17)

Object no. LI-M-BF0120-006

Fr. of disc foot.

D. of foot 5.5; pres. H. 2.5.

Fine clay with smoothed surface, no visible inclusions, pale gray to pinkish brown (10 YR 6/2 to 10 YR 6/4), surface pale beige (10 YR 8/3).

Coating on the inside, black.

D3.19. Fish plate (figs. 17, 18)

Object no. LI-M-BF0120-001

Fr. of disc foot.

D. of foot 5.2; pres. H. 2.

Hard, fine clay with carefully smoothed surface, a few light inclusions, pale pinkish brown (ca. 5 YR 7/4, surface 5 YR 7/4-6).

Coating on the inside, black to dark brown.

D3.20. Reversible lid (fig. 17)

Object no. LI-M-BF0120-020

Fr. of rim.

D. of rim 17.5; pres. H. 2.5.

Fine clay with smoothed surface, slightly micaceous, pale pinkish beige (ca. 7.5 YR 7/4), surface pale beige (ca. 10 YR 8/4).

Coating on the outside, thin and translucent, bright reddish brown (2.5 YR 5/8).

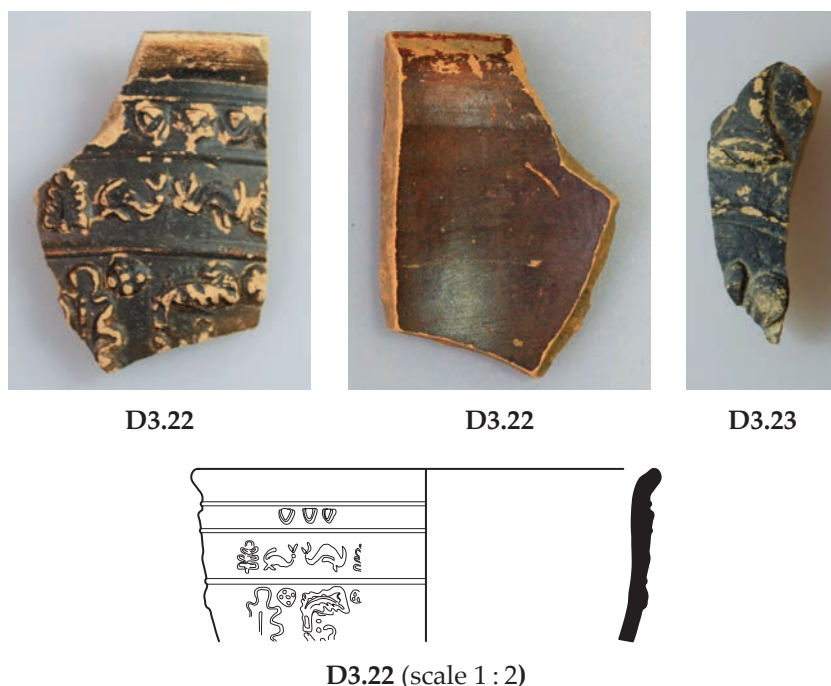


Fig. 19 : Group D level 3 – Fine ware: moldmade bowls
(scale 1 : 1, except drawing of D3.22).

D3.21. Unguentarium (fig. 18)

Object no. LI-M-BF0120-030

Fr. of wall from upper section of the vessel.

Dimensions 2.4 × 2.5; pres. H. 2.4.

Hard, fine clay with carefully smoothed surface, lime inclusions and black particles, pinkish brown (2.5 YR 5/8), surface yellowish brown (7.5 YR 6/3).

Decoration: two painted horizontal lines around the neck/shoulder, both black.

Moldmade fine ware

D3.22. Moldmade bowl (fig. 19)

Object no. LI-M-BF0120-010

Fr. of rim

D. of rim 11.5; pres. H. 4.4.

Hard, fine clay with dense texture, pinkish brown (7.5 YR 7/4).

Fr. completely coated, coating slightly lustrous, on the outside black, on the inside dark reddish brown to black.

Decoration: parts of three relief zones separated by lines, in the upper zone egg-and-dart motif, in the middle zone row of small palmettes flanked by dolphins (antithetic Group), in the lower zone part of a calyx, pres. on the left acanthus leaf with

upright tip, on the right acanthus leaf with tip turned to the right, between the tips of the leaves small rosettes.

For the acanthus leaves compare D4.11.

D3.23. Moldmade bowl (fig. 19)

Object no. LI-M-BF0120-029

Fr. of wall, 3.9 × 1.5.

Hard, fine clay with a few dark inclusions, pinkish brown (7.5 YR 6/4).

Fr. completely coated, slightly lustrous in places, black.

Decoration: parts of two relief zones separated by a line, in the lower zone remains of a rosette(?), in the upper zone elongated object, maybe part of floral decoration?

Plain and coarse wares

D3.24. Jar (fig. 20)

Object no. LI-M-BF0120-019

Fr. of rim.

D. of rim 14.6; pres. H. 1.9.

Fine but easily breaking clay, rough surface, highly micaceous, lime inclusions, orange brown (2.5 YR 5/8), surface pale reddish brown (ca. 2.5 YR 6/6).

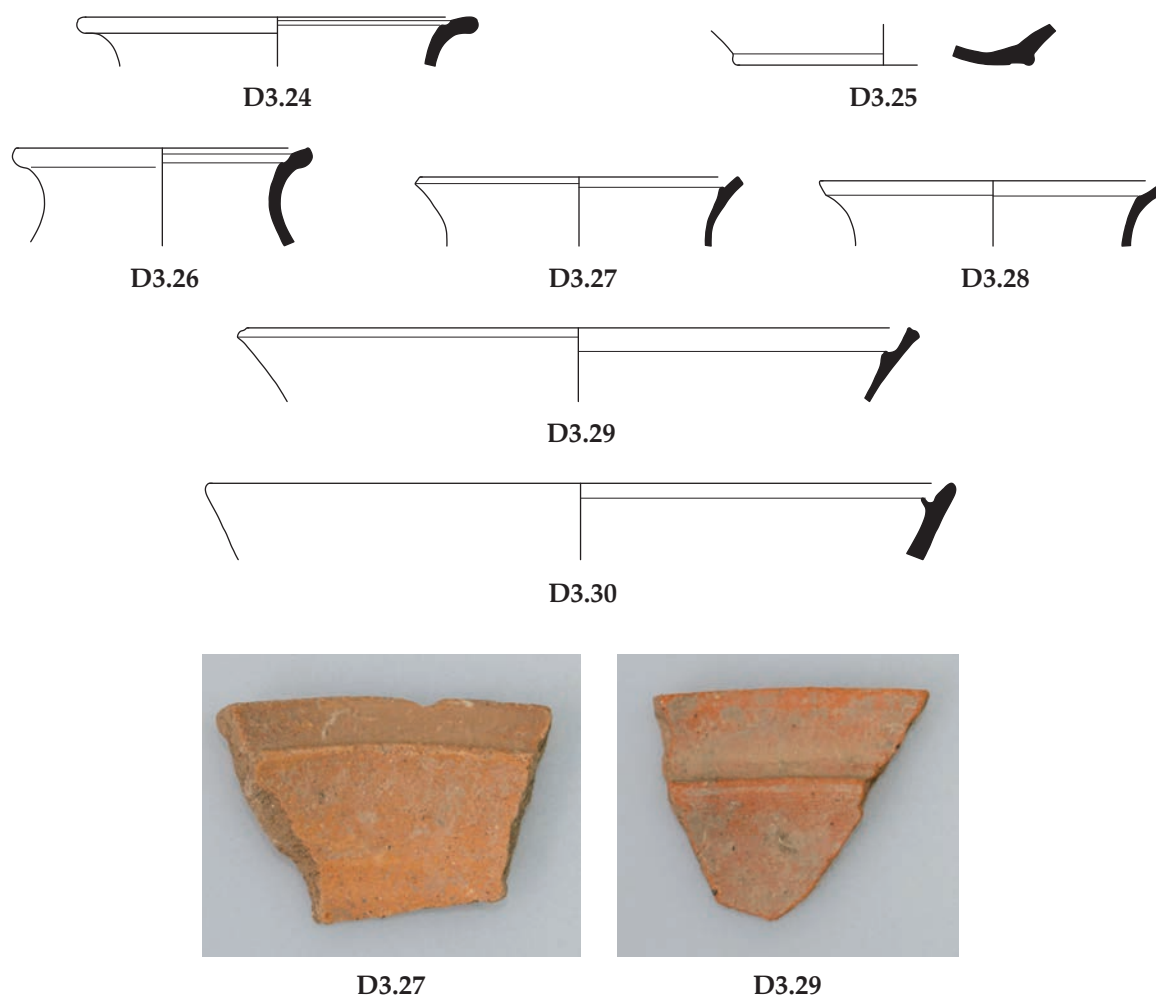


Fig. 20 : Group D level 3 – Plain and coarse wares (scale of drawings 1 : 3, scale of photographs 1 : 1).

D3.25. Jar (fig. 20)

Object no. LI-M-BF0120-025

Fr. of foot.

D. of foot 11; pres. H. 1.5.

Hard, fine clay, surface smoothed on the outside, slightly micaceous, some dark inclusions, pale beige (7.5 YR 7/6).

Fr. of rim.

D. of rim 12; pres. H. 2.1.

Fine and highly micaceous clay, numerous quartz inclusions, grayish brown (2.5 YR 5/1), surface orange brown (5 YR 5/8).

D3.26. Chytra (fig. 20)

Object no. LI-M-BF0120-023

Fr. of rim.

D. of rim 11; pres. H. 3.7.

Fine and highly micaceous clay, quartz and lime inclusions, yellowish brown (5 YR 5/8), surface pale beige.

D3.28. Chytra (fig. 20)

Object no. LI-M-BF0120-027

Fr. of rim.

D. of rim 13; pres. H. 2.5.

Fine and highly micaceous clay, quartz inclusions, grayish beige (7.5 YR 5/4), surface pinkish beige.

D3.27. Chytra (fig. 20)

Object no. LI-M-BF0120-022

D3.29. Lopas (fig. 20)

Object no. LI-M-BF0120-021

Fr. of rim.

D. of rim 25; pres. H. 2.8.

Fine, slightly porous clay with quartz inclusions, orange brown (2.5 YR 4/8), surface pale orange brown (ca. 2.5 YR 6/8).

D3.30. Lopas (fig. 20)

Object no. LI-M-BF0120-015

Fr. of rim.

D. of rim 28; pres. H. 2.9.

Hard and slightly porous clay with numerous quartz inclusions, black, surface dark brown, colour probably result of burning.

Level 4 (BF 121)

Fine ware: drinking vessels

D4.1. Miniature skyphos (fig. 21)

Object no. LI-M-BF0121-005

Complete foot and part of the lower body.

D. of foot 2.9; pres. H. 3.6.

Soft, fine clay with dense texture and smoothed surface, black inclusions, pale brown (2.5 Y 6/2), surface pale beige (2.5 Y 8/3).

Coating on the inside, translucent, black.

Decoration: painted horizontal line around the foot, some patches, dark grayish beige (ca. 2.5 Y 6/3).

D4.2. Gnathia-type skyphos (fig. 22)

Object no. LI-M-BF0121-011

Fr. of the stem / lower body.

Pres. D. max. 7; pres. H. ca. 5.2.

Hard, fine clay with carefully smoothed surface, a few black inclusions, pinkish brown (7.5 YR 8/4).

Coating on the inside and on the upper part of the body, thick and lustrous, black, in the centre of the inside dark brown circle (7.5 YR 4/4).

Decoration: body covered with vertical grooves.

D4.3. Kantharos (fig. 21)

Object no. LI-M-BF0121-008

Fr. of rim.

D. of rim 8; pres. H. 1.6.

Soft and easily breakable clay with a few dark inclusions, beige (10 YR 7/4).

Fr. completely coated, on the outside beige (ca. 5 YR 6/6), on the inside pinkish brown (2.5 YR 5/4).

D4.4. Miniature kantharos (fig. 21)

Object no. LI-M-BF0121-006

Fr. of the foot with part of lower body.

D. of foot 3.6; pres. H. 2.5.

Soft clay with smoothed surface, a few black inclusions, beige (ca. 10 YR 8/4, surface 10 YR 8/6).

Coating on the inside, black.

Decoration: body covered with vertical grooves.

Also inventoried: fr. of kantharos handle (object no. LI-M-BF0121-017).

D4.5. Conical bowl (figs. 21. 22)

Object no. LI-M-BF0121-003

Two frs. of the rim, joining.

D. of rim 12; pres. H. 2.8.

Hard, fine clay with lime inclusions and black particles, beige (10 YR 6/3).

Frs. completely coated, black.

Decoration: on the inside scratched horizontal lines below the lip and in the lower section of the frs., between the lines band of rouletting framed by painted lines, colour vanished.

D4.6. Conical or hemispherical bowl (figs. 21. 22)

Object no. LI-M-BF0121-007

Fr. of foot / bottom.

D. of foot 6; pres. H. 1.7.

Hard, fine clay with carefully smoothed surface, no visible inclusions, pinkish brown (7.5 YR 7/4).

Fr. completely coated, on the outside patchy and translucent, black.

Decoration: on the inside in the centre painted circle, colour vanished, in the centre of the circle remains of rouletting or stamped decoration(?).

D4.7. Conical or hemispherical bowl (figs. 21. 22)

Object no. LI-M-BF0121-004

Fr. of foot / bottom.

D. of foot 3.8; pres. H. 1.8.

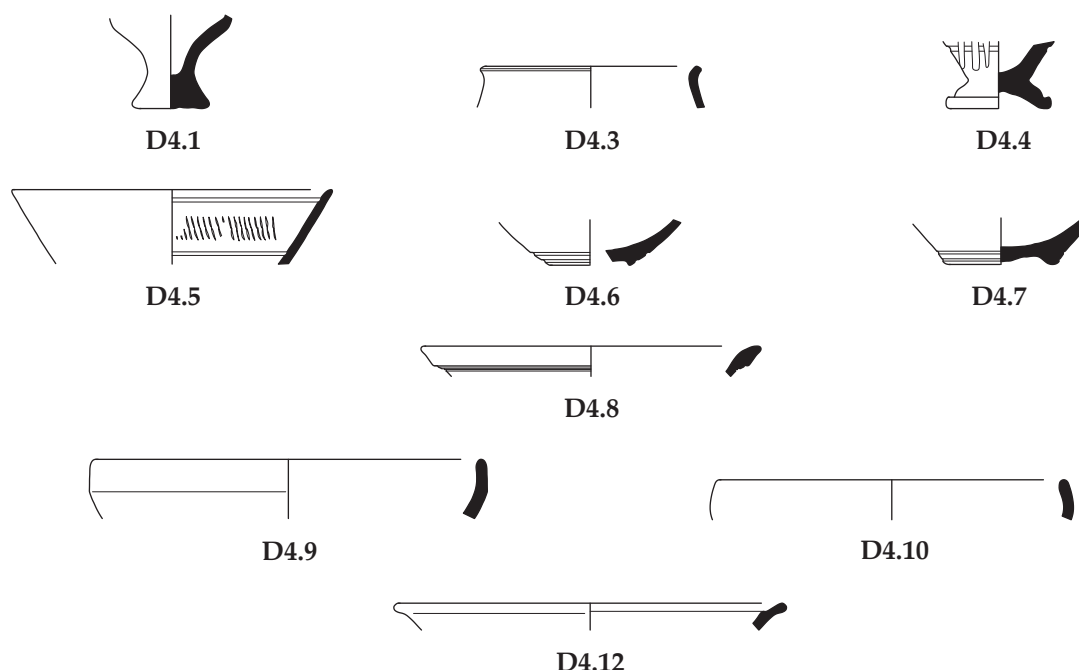


Fig. 21 : Group D level 4 (scale 1 : 3).

Hard, fine clay with some black inclusions, pale brown (ca. 10 YR 6/2).
Fr. completely coated, translucent in places, black.

D4.8. Bowl with outcurved rim(?)
(figs. 21. 22)

Object no. LI-M-BF0121-001

Fr. of rim.

D. of rim 12.5; pres. H. 1.1.

Hard, very fine clay without visible inclusions, light gray (2.5 Y 6/2).

Fr. completely coated, slightly lustrous, black.

Decoration: on the outside below the lip pair of horizontal grooves, on the inside painted horizontal line and remains of further painted decoration.

Fine ware: vessels for food service

D4.9. Bowl with incurved rim (fig. 21)

Object no. LI-M-BF0121-010

Fr. of rim.

D. of rim 14.5; pres. H. 2.2.

Soft, fine clay with some black inclusions, pinkish brown (5 YR 6/4).

Fr. completely coated, patchy, black.

D4.10. Bowl with incurved rim (fig. 21)

Object no. LI-M-BF0121-002

Fr. of rim.

D. of rim 13; pres. H. 1.5.

Hard, fine clay with a few black inclusions, pale brown (10 YR 6/4).

Fr. completely coated, black.

Also inventoried: frs. of a further bowl with incurved rim (object no. LI-M-BF0121-016) and of a plate with thickened lip (object no. LI-M-BF0121-15).

Moldmade fine ware

D4.11. Moldmade bowl (fig. 22)

Object no. LI-M-BF0121-012

Two frs. of the wall, joining.

Dimensions: 4 × 4.8.

Soft, fine clay with a few dark inclusions, pale beige (ca. 7.5 YR 7/6).

Frs. completely coated, coating thick and patchy, slightly lustrous; black, on the outside also gold beige (2.5 YR 5/8-4/8).

Decoration: part of a calyx, remains of four acanthus leaves, alternating leaves with an upright tip and leaves with a tip turned to right; row of small lancet leaves with a



Fig. 22 : Group D level 4 (scale 1 : 1, except D4.2).

central rib around the base of the acanthus leaves; shell foot in the lower section of the fragment.

For the acanthus leaves compare D3.22.

Also inventoried: small fr. of further moldmade bowl (object no. LI-M-BF0121-014).

Coarse ware

D4.12. Chytra (fig. 21)

Object no. LI-M-BF0121-009

Fr. of rim.

D. of rim 14.5; pres. H. 1.1.

Fine clay with lime inclusions, black particles and quartz inclusions, reddish brown (2.5 YR 6/8-5/8), pale on the surface.

Also inventoried: two frs. of chytra handles (object nos. LI-M-BF0121-013 and -018).

Level 5 (BF 122)

D5.1. Attic-type skyphos (fig. 23)

Object no. LI-M-BF0122-002

Fr. of the rim with part of a horizontal handle.

D. 9.5; pres. H. 2.3.

Soft, fine clay with some black inclusions, pinkish brown (7.5 YR 7/3).

Fr. completely coated except for zone between the handle joins to the wall, coating thin, dull, rough, and patchy, black to dark brown.

D5.2. Kantharos (fig. 23)

Object no. LI-M-BF0122-003

Fr. of rim.

D. of rim 7; pres. H. 3.4.

Soft, fine clay with light and dark inclusions, pinkish brown (5 YR 6/4).

Fr. completely coated, coating thin and translucent, black to dark brown.

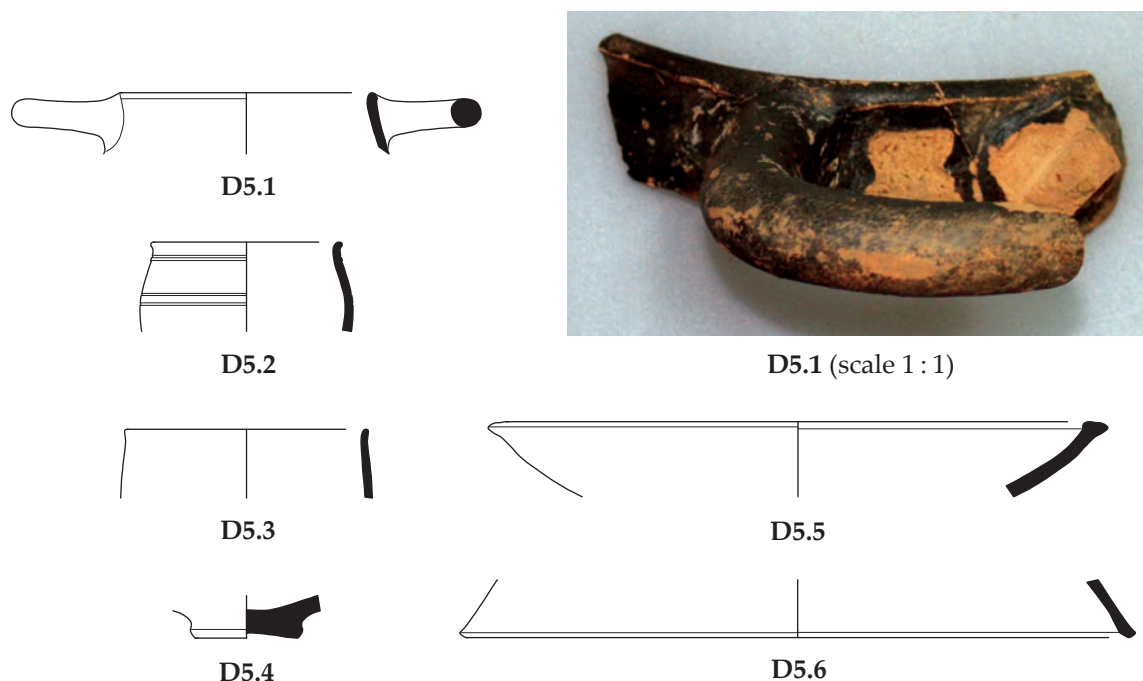


Fig. 23 : Group D level 5 (scale 1 : 3, except D5.1).

Decoration: on the outside below the lip two pairs of horizontal grooves, framing a zone with lost painted decoration.

D5.3. Kantharos (fig. 23)

Object no. LI-M-BF0122-005

Fr. of rim.

D. of rim 9; pres. H. 2.6.

Soft, fine clay with some dark inclusions, grayish brown (7.5 YR 7/2).

Fr. completely coated, black.

D5.4. Bowl (fig. 23)

Object no. LI-M-BF0122-001

Nearly complete disc foot.

D. of foot 3.9; pres. H. 1.6.

Soft, fine clay with smoothed surface, a few lime inclusions and dark particles, pinkish beige (7.5 YR 7/6).

Coating on the inside, thin, translucent, dull, gold beige to reddish brown (ca. 5 YR 5/8).

D5.5. Plate (fig. 23)

Object no. LI-M-BF0122-006

Fr. of rim.

D. of rim 22; pres. H. 2.9.

Hard, fine clay with smoothed surface, some dark inclusions, pinkish brown (7.5 YR 6/4), surface light beige (10 YR 8/3).

Coating on the inside only, thin, dull, translucent in places, black.

D5.6. Lid (fig. 23)

Object no. LI-M-BF0122-004

Fr. of rim.

D. of rim 25; pres. H. 2.2.

Fine and slightly porous clay, smoothed surface, quartz inclusions, reddish brown (2.5 YR 4/6), pale on the surface.

Bibliography

- BUDINA 1972 D. Budina, Antigonée (fouilles 1966–1970), *Iliria* 2, 1972, 269–378
- CARTA – ZEVI 1978 M. Carta – F. Zevi, La taberna dell’Invidioso, *NSc* 32, 1978 Suppl. Ostia (Rome 1987) 9–164
- CEKA 1972 N. Ceka, La ville illyrienne de la Basse-Selce, *Iliria* 2, 1972, 169–215
- CEKA 1985 N. Ceka, Qyteti ilir pranë Selcës së Poshtme – The Illyrian City in Selca e Poshtme (Tirana 1985)
- HIDRI 1986b H. Hidri, Nekropoli antik i Dyrrahut (Rezultatet e gërmimeve të viteve 1973 dhe 1980) – La nécropole antique de Dyrrachion (rapport sur les fouilles 1973, 1980), *Iliria* 16.2, 1986, 99–128
- HOTI 1977–78 A. Hoti, Kërkime arkeologjike në zonën e kryemdhejit në Rrethin e Durrësit, *Iliria* 7–8, 1977–78, 325–330
- KÖGLER 2009–2010 P. Kögler, Abseits der Zentren – Zwischen den Zentren: Die importierte und nicht importierte Feinkeramik aus Lissos – Eine Studie zu den ökonomischen und kulturellen Beziehungen der Stadt im späten Hellenismus, *Iliria* 34, 2009–2010, 77–84
- KÖGLER 2010 P. Kögler, Feinkeramik aus Knidos vom mittleren Hellenismus bis in die mittlere Kaiserzeit (ca. 200 v. Chr. bis 150 n. Chr.) (Wiesbaden 2010)
- KÖGLER 2019 P. Kögler, Lissos in Illyria: Two Centuries of Hellenistic Pottery, and a Plea for the Publication of Contextual Material, *JHP* 4, 2019, 79–141
- LAHI 2013 B. Lahi, Überblick über die hellenistischen Transportamphoren von Lissos/Albanien, in: N. Fenn – Chr. Römer-Strehl (eds.), *Networks in the Hellenistic World According to the Pottery in the Eastern Mediterranean and Beyond*, *BARIntSer* 2539 (Oxford 2013) 107–115
- LAHI 2015 B. Lahi, Amfora transporti të periudhës helenistike nga Lissos. Rezultate paraprake nga gërmimet arkeologjike të viteve 2006–2011, *Iliria* 39, 2015, 257–289
- LAMBOLEY – VREKAJ 1999 J.-L. Lamboley – B. Vrekaj, Premiers résultats des fouilles franco-albanaises à Apollonia (1993–1996), in: P. Cabanes (ed.), *L’Illyrie méridionale et l’Épire dans l’Antiquité III. Actes du IIIe colloque international de Chantilly, 16–19 Octobre 1996* (Paris 1999) 189–203
- DE LUCA 2021 G. de Luca, Hellenistische Reliefbecher aus Pergamon. Die Megarischen Becher von der Akropolis, aus dem Asklepieion, der Stadtgrabung und von weiteren Fundorten, *PF* 18 (Wiesbaden 2021, in print)
- DE LUCA – RADT 1999 G. de Luca – W. Radt, Sondagen im Fundament des Großen Altars, *PF* 12 (Berlin 1999)
- MIŠE 2015 M. Miše, Gnathia and Related Hellenistic Wares on the East Adriatic Coast (Oxford 2015)
- MOREL 1981 J.-P. Morel, *Céramique Campanienne: Les Formes* (Rome 1981)
- OETTEL 2008 A. Oettel, Lissos (Albanien), in: *Jahresbericht des Deutschen Archäologischen Instituts 2007*, *AA* 2008 Beih. (Munich 2008) 33–36
- OETTEL 2010 A. Oettel, Lissos (Albanien), in: *Jahresbericht des Deutschen Archäologischen Instituts 2009*, *AA* 2010 Beih. (Munich 2010) 33–36
- OETTEL 2014 A. Oettel, Von der illyrischen Festung zum römischen oppidum. Die Transformationsprozesse der illyrischen Stadt Lissos/Lissus, in: L. Përzhita – I. Gjipali – G. Hoxha – B. Muka (eds.), *Proceedings of the International Congress of Albanian Archaeological Studies. 65th Anniversary of Albanian Archaeology* (21–22 November, Tirana 2013) (Tirana 2014) 455–468

- OETTEL 2015 A. Oettel, Lissos in Albanien – eine illyrische Stadt in hellenistischer Zeit, in: A. Matthaei – M. Zimmermann (eds.), Urbane Strukturen und bürgerliche Identität im Hellenismus, Die hellenistische Polis als Lebensform 5 (Mainz 2015) 237–254
- OETTEL – HOXHA forthcoming A. Oettel – G. Hoxha, Lissos in Illyrien. Ergebnisse der deutsch-albanischen Ausgrabungen 2006 bis 2011, Lissos 1. Archäologische Untersuchungen in der nord-albanischen Küstenebene, ÄF (in preparation)
- REYNOLDS SCOTT 2008 A. Reynolds Scott, Cosa: The Black-Glaze Pottery 2, MemAmAc Suppl. 5 (Ann Arbor 2008)
- ROTROFF 2011 S. I. Rotroff, The Date of the Long-Petal Bowl: A Review of the Contextual Evidence, in: Ζ'Επιστημονική Συνάντηση για την ελληνιστική κεραμική, Aigio 2005 (Athens 2011) 635–644
- SMALL 1992 A. M. Small (Hrsg.), An Iron Age and Roman Republican Settlement on Botromagno, Gravina di Puglia. Excavations of 1965–1974, 2. The Artifacts (Rome 1992)
- VELIMIROVIĆ-ŽIŽIĆ 1966 O. Velimirović-Žižić, Trouvaille de Momišići (Russian), Starinar 15–16, 1966, 193–207